



British Skewbald and Piebald Association
“Everything for the Coloured Horse Enthusiast”

JUDGES PANEL AND SHOWING RULES 2014

This Rule Book may be amended at any time – all changes will be notified on the
BSPA website www.bsponline.com

**Stanley House, Silt Drove,
Tipps End, Nr Welney, Cambs PE14 9SL
Tel: 01354 638226
email: bspashows@aol.com**

Office hours: Tuesday – Friday, 11:00am – 3:00pm

www.bsponline.com

NEWS FROM THE BSPA

ROYAL INTERNATIONAL NEWS

RIHS Hickstead Tuesday 29th July – Download Schedule, Entry and Stable Form from www.hickstead.com. Entries directly to Hickstead.

QUALIFIED FOR RIHS 2014 send your signed Qualification Card (Section 2) to BSPA Office **IMMEDIATELY** you qualify. This also applies to qualifications carried over from 2013. Send it in **NOW**.

NEW FOR 2014 – The Colosso Junior Championship

The top two Junior Members (Junior membership cards to be carried into the ring and produced in order to secure qualification) in every section will go through to the Colosso Junior Championship at the end of the day. Winner will receive gift voucher for £100 Reserve £50.

RIHS Tuesday 29th July – The Merrigan Memorial Amateur Championship

The top two Amateur members (Amateur cards to be carried into the ring and produced in order to secure qualification) in every section will go through to the Amateur Championship at the end of the day. Winner will receive Gift Voucher for £100 Reserve £50.

EQUIFEST - NEW for 2014

There will be a BSPA Members Championship inhand and ridden. These will be from BSPA classes on Wednesday with a Championship in the evening performance. Champion and reserve inhand and ridden will be eligible to compete – please look at Equifest Schedule for full information.

We are very please to continue our sponsorship of Equifest Coloured Championships inhand and ridden, BSPA Member rosette will be awarded in the Supreme Championships.

Remember you can qualify for Equifest out of any BSPA Affiliated class, and for BSPA Championships from Equifest qualifiers, Just send a copy of your signed qualification card with your entries.

THE BSPS/BSPA COLOURED RIBAND PONY RIDDEN CHAMPIONSHIP 2014

THE FINAL WILL BE HELD ON FRIDAY 23 AUGUST AT THE BSPS SUMMER CHAMPIONSHIP SHOW ARENA UK GRANTHAM

TWO CLASSES, WILL BE SPLIT INTO PLAITED PONIES + TRAD, NATIVE, HOGGED COB PONIES (Evening Performance championship with Celebrity Judges)

HOW TO QUALIFY

- ★ Open to BSPA members on BSPA registered ponies only ★
- ★ Top eight in each pony section at BSPA RIHS final Hickstead qualifier automatically ★
 - ★ At BSPA Regional Shows top three in every RIHS pony Qualifier ★
 - ★ At all BSPA RIHS Qualifiers the top two ponies will qualify ★
- ★ How do I know if I have qualified – you will be send letter and rosette ★
 - ★ **You do not have to be a member of BSPS to enter final** ★
 - ★ You do have to be a member of BSPA with a registered BSPA pony ★

INDEX

- | | | | |
|----|---|----|---|
| 2 | Social Media and Internet Policy | 23 | Body Fat Guide |
| 3 | Equal Opportunity Statement | 24 | Section C – Qualification Requirements for the BSPA World Championships of Colour |
| 4 | Rules 2014 | 26 | Section D – The Royal International Horse Show |
| 5 | Child Protection and Health & Safety Policies | 28 | Reporting Alleged Acts of Cruelty or Abuse of any animal at BSPA administered shows |
| 6 | Position Statement on Animal Welfare | 28 | Disciplinary Procedure |
| 7 | Judging Criteria | 30 | The Brightwell Auctioneers Skewbald and Piebald Sports Horse and Pony In-Hand National Championship |
| 8 | Judging Colour and Markings Classes | 31 | Panel of BSPA Judges 2014 |
| 9 | Requirements for Colour | 47 | Showing Tips |
| 10 | Marking Types and Patterns | 48 | All about Elite |
| 11 | Horse Passports and Registrations | 50 | BSPA Studbook Structure and Rules |
| 12 | Membership Fees | 52 | Young Horse Evaluations Explained |
| 12 | Payment Methods | 56 | BSPA Officers 2014 |
| 13 | BSPA Contacts and Regions | | |
| 13 | JMB Height Certificate | | |
| 14 | Section A – Guidelines, Rules and Regulations for Judges and Show Secretaries | | |
| 19 | Section B – General Showing Rules for BSPA Shows | | |

ABBREVIATIONS

JMB	–	Joint Measurement Board
RIHS	–	Royal International Horse Show
WCC	–	World Championships of Colour
BSPA	–	British Skewbald and Piebald Association
WH	–	Working Hunter
PUK	–	Ponies Association UK
BSPS	–	British Show Pony Society
SHB	–	Sports Horse Breeding UK

**IT IS THE RESPONSIBILITY OF MEMBERS TO
BE FAMILIAR WITH BSPA RULES**

**A VERTICAL LINE INDICATES A NEW
OR AMENDED RULE FOR 2014**

DO NOT USE MOBILE PHONES IN THE RING

THE BRITISH SKEWBALD AND PIEBALD ASSOCIATION SOCIAL MEDIA AND INTERNET POLICY, 2013

POLICY CONTEXT:

This policy is part of and inclusive with our BSPA Child Protection and Equal Opportunity Policies. As such it should be read in conjunction with them.

The BSPA continues to require that our competitive environment is **“conducted with fairness and equity wherein respect and tolerance for others is shown by all” and that Children and vulnerable adults should be protected from abuse or exploitation.**

These values are at the heart of our introduction of this “BSPA Social Media and Internet policy 2013.

As is clear from these policies the BSPA will not tolerate any offensive or bullying use of Social Media by either members, Judges or Officials. Nor will we tolerate any discriminatory behaviour or language.

We do not condone nor will we accept any behaviour by either members, Judges or Officials that is not seen as respectful or tolerant to others. Nor will we tolerate any behaviour that could be construed as bullying (cyber bullying included).

We recognise that this relatively new medium is open to abuse of our “Equal Opportunities” values. **It should be noted however, that the laws of ‘defamation of character, and libel do now apply to Social Media and networking.**

As such:-

- Any member (Judge or official) observed or considered to be using “Social Media” (Facebook, Twitter, Web/Chat rooms) in a derogatory, offensive or otherwise thoroughly disrespectful manner or to pursue a ‘personal vendetta’ or to invite such behaviour from others, will be considered by the Board of the BSPA, to have brought themselves into disrepute and as such to be liable to BSPA Disciplinary process or to have their membership revoked, thus losing all the benefits and entitlements of membership.
- Any Person applying for membership or a current BSPA Member, Judge or official whom it can be independently verified, has been the subject of a successful Criminal prosecution, (including a police caution) or has received a Disciplinary sanction from another Society, resulting from abuses as described above, will also become subject to BSPA Disciplinary process or will have their membership revoked. Thus losing all the benefits and entitlements of BSPA membership.
- This sanction will be in place for a minimum of twelve months or two consecutive membership years. Whichever is the longest before any application for membership to the BSPA can be made again.

BSPA Chairman and Council 21/07/2013

1. INTRODUCTION

- The BSPA acknowledges the importance of the internet and social media sites such as Facebook, Twitter, Linked in, home web-pages, chat rooms, BBM and all other forms of electronic communication and the role which isocial media plays in the day to day lives of members (Judge or official).
- This policy note is to remind members that the Rules of the BSPA apply to ALL members when using social media and the internet. Failure to adhere to this policy could lead to disciplinary action being taken against a member (Judge or official).

2. USING SOCIAL MEDIA

- 2.1** You should be aware that the BSPA may from time to time carry out internet searches to identify postings which include references to the BSPA and its members (Judges or officials).
- 2.2** BSPA produced images are the subject of copyright and should not be copied or used in social media save as provided in the BSPA website user terms and conditions.

- 2.3 You should ensure that any material that you transmit or post to social media is clearly stated to be your personal view and is not held out to be, or could be mistaken as, the view of the BSPA.
- 2.4 You must not post or transmit any material which could damage the name or reputation of the BSPA its members or former members, or which is derogatory to the character of or prejudicial to the interests of the BSPA
- 2.5 You must not post or transmit any material relating to the BSPA members or former members (Judges or officials) or their horses or ponies, or which could otherwise be associated with or which may reasonably be attributed as coming from the BSPA:
 - 2.5.1 Nor post or transmit any material that is threatening, defamatory, obscene, indecent, seditious, offensive, pornographic, abusive, liable to incite racial hatred, discriminatory, menacing, scandalous, inflammatory, blasphemous, in breach of confidence, in breach of privacy or which may cause annoyance, distress or inconvenience; OR
 - 2.5.2 Nor post or transmit any material which constitutes or encourages conduct that would be in breach of the BSPA Rules, or constitutes a criminal offence, or which could give rise to civil liability, or otherwise be contrary to the laws of, or infringe the rights of any third party in, the UK or any other country in the world.
- 2.6 Any breach of this policy may constitute a breach of the BSPA Rules and could also lead to Civil and/or criminal proceedings being brought against you.

3. DISCLOSURE UNDER LAW OR REGULATION

You should be aware that the BSPA will fully co-operate with any law enforcement authorities or court order requesting or directing the BSPA to disclose the identity or locate anyone posting any material in breach of this Policy. If we are requested by the police or any other regulatory or government authority investigating suspected illegal activities to provide your personal information, then the BSPA is entitled to do this.

4. THIS POLICY IS EFFECTIVE IMMEDIATELY.

BSPA EQUAL OPPORTUNITY STATEMENT

The BSPA values equestrian and membership diversity and seeks to establish and maintain an environment within which competition is conducted with fairness and equity wherein respect and tolerance for others is shown by all.

The BSPA values all equines and seeks to ensure a non-discriminatory showing environment with a "level playing field" for all

The rules of the BSPA and the conduct of Officers seek to establish and secure equality of competitive opportunity in all equine spheres.

All members are considered of equal status and valued. None are given privileges or exemptions regarding BSPA rules and code of conduct.

The BSPA does not tolerate any offensive or discriminatory behaviour from any member towards Judges, stewards or officers, nor between members.

The BSPA will not tolerate any discriminatory behaviour or language. This will include issues of Race, Faith, Culture, Gender, Sexuality, Age, Disability or Appearance..

Anyone found to be behaving in this way will be removed from the register of membership and lose all benefits and entitlements of membership

RULES 2014

All exhibitors competing at BSPA shows shall be considered as having read the following Rules. Exhibitors will be considered under BSPA Rules as soon as they enter the Ring.

CHAMPIONSHIPS

Riders/Handlers may not be changed for any Championship unless the Rider Handler has qualified more than one exhibit at Championship Shows. Permission must be obtained.

MINIATURE SHETLANDS

Miniature Shetlands 34" and under must be ridden in classes by a rider of the appropriate size to that pony. Judges discretion will apply.

LEAVING THE RING

Exhibitors walking out of the ring without seeking permission from the Judge may be refused entry into subsequent classes.

JUDGES

In the event of a fall of horse or rider, all Judges must report the incident in writing to the BSPA Office within 7 days of the incident occurring.

RIDE JUDGES

Ride Judges falling or being thrown from exhibits may not remount the exhibit they have fallen or been thrown from (in these circumstances the exhibit must be removed unmounted from the ring). Judges may at their discretion continue to judge the class on individual display. Should the Judge who has fallen or been thrown from an exhibit decide to continue ride judging, they do so entirely at their own risk. All exhibits previously ridden by the Judge must also perform an individual display. In the event of the Judge being unable to continue a substitute Judge may be appointed who will also judge the class on individual display and will not ride. Should a substitute Judge not be available to judge, the class will be abandoned. No refund of fees in these circumstances.

TRIMMING

It is recommended that Traditional Cob Horse and Pony beards may be trimmed from the jaw line. Muzzle whiskers, moustache, nasal hair should be left untrimmed. Long hairs may be trimmed from outside the ears, no trimming of interior ear hair is recommended. Mane, tail and feathers should be left untrimmed, the only exception is when mane and tail hair is so long as to present a health or safety issue, then trimming is recommended and may be requested.

HEALTH & SAFETY

The BSPA has reviewed its Health & Safety Policy and now wish all Judges and Members to carry a personal basic information sheet for use by BSPA or medical personnel in the event of illness or injury.

This confidential information should be carried in the right hand jacket or coat pocket.

The form should contain the following information:

- FULL NAME
- ADDRESS
- CAR NUMBERPLATE
- HOME TELEPHONE NUMBER OR CONTACT NUMBER
- ESSENTIAL MEDICAL DATA (e.g. blood group, allergies, any personal medication or health condition)
- NEXT OF KIN + TELEPHONE NUMBER

The BSPA will only access this information during a serious incident or personal emergency.

The data accessed will not be disclosed to any third party other than medical personnel *Doctor or Paramedic).

THE BSPA DATA PROTECTION POLICY APPLIES

THE BSPA CHILD PROTECTION AND HEALTH AND SAFETY POLICIES

Duty of Care: the BSPA seeks to ensure that all children young people and vulnerable adults attending BSPA organised shows and events are safe and protected from harm. We believe that all members have a right to expect that we will safeguard and promote their interests irrespective of age, gender, racial origin, religious belief, sexuality, or any disability they may have. We also believe that all children have a right to be protected from abuse or exploitation. Wherever possible the BSPA will ensure that the rights of children, young people, and vulnerable adults are protected at our events.

As such we fully endorse the BEF/BHS code of good practice and have implemented our own Child Protection Policy (to be reviewed annually) as follows:

The BSPA CHILD PROTECTION POLICY STATEMENT:

The BSPA is committed to ensure that:-

- The welfare of children, young people, and vulnerable adults is paramount.
- All children have a right to be protected from abuse or exploitation.
- All children/Young people and vulnerable adults who take part in any BSPA equestrian event should be able to participate in a safe secure and enjoyable environment, within fair and even handed approach to competition and fair play.

The BSPA expects all Competitors and all Judges, Stewards and BSPA Officers to take all reasonable steps to protect children from harm, discrimination and degrading treatment and to respect their rights and wishes and feelings.

- Any complaint or suspicion of abusive or inappropriate behaviour or practice will be taken seriously by the BSPA. The Complaints Procedure will be evoked and any suspicious or Child Abuse incident will be referred to the appropriate Local Authority for Investigation under the Child Abuse and Protection Procedures.
- High Standards are expected of all Judges, Stewards, Officers and Sessional workers, who will be expected to reflect and endorse the requirements and valued of this Policy when officiating at BSPA shows and events.

www.bspaonline.com

Everything for the Coloured Horse Enthusiast

Twitter and Facebook

THE BSPA CHILD PROTECTION STATEMENT FOR JUDGES

In order to act as a Judge, Show Official or Council Member with the British Skewbald and Piebald Association all personnel wishing to act as such must comply with the following requirement.

At the point of application to become a Judge, Show Official or Council Member the individual is required to disclose whether they have any conviction, caution or outstanding matter against them that would make them unsuitable to be in proximity to under 18 year olds and those adults and children deemed to be vulnerable. This would include any penalty that has been imposed in the past and currently deemed 'spent'.

In addition, if at any point during the time the individual occupies such a position with the British Skewbald and Piebald Association, they are required to disclose directly to the Chair the following circumstances:-

- a) any pending investigations by child protection agencies,
- b) any caution, final warning or reprimand received for offences against a minor or vulnerable adult,
- c) any conviction against a minor or vulnerable adult,
- d) any conviction that would prevent them working with children or vulnerable adults,
- e) any restriction on employment, including suspension or dismissal due to concerns regarding their safeness to work with children and vulnerable adults. (This would include inclusion on any register or list held to prevent individuals working when they present a risk.)

Whilst this is a voluntary arrangement designed to affect a safe environment for children to show and partake in equine events, should the British Skewbald and Piebald Association Council receive information that proves a Judge, Show Official or Council Member has been found to be unfit to work with children or vulnerable adults; their status with the association will be immediately terminated. The association will then ensure the individual is disassociated with the organisation in all appropriate ways.

THE BSPA HEALTH AND SAFETY POLICY STATEMENT

The BSPA Trustees strive to ensure that all of its activities are run from appropriate venues and are organised with Health, Safety and Welfare in mind.

- We will work with others to provide appropriate levels of safety and security within our Shows and Events.
- We will assess (under any specific duty or regulation as laid down), any risk issues associated with the Show or Event and carry out all actions required within the assessment Action Plan.
- We will seek to establish and promote a positive Health and Safety Culture within the Association
- We will require all Judges to conduct themselves within the policy as laid down.

BSPA POSITION STATEMENT ON ANIMAL WELFARE

The British Skewbald and Piebald Association is committed to the humane and proper treatment of all animals but equines in particular. We support and are committed to the improvements for Equine Welfare and in particular the introduction of a duty of care as laid down in the "Equine Industry Welfare Guidelines Compendium for Horses, Ponies and Donkeys" 3rd edition 2009.

- The welfare of the Horse/Pony is the prime concern in all activities
- Horses/Ponies will be treated with kindness, respect and compassion at all times
- All parties whether Owner, Rider, Handler, Groom, Exhibitor, Trainer, or any person involved in handling, riding or the transportation of equines will use responsible care and will ensure the health and well being of equines/animals in their care at all times
- The standard by which conduct or treatment will be measured is that which a reasonable person, informed and experienced in generally acceptable animal husbandry standard and equine care, training or showing procedure would determine to be neither cruel, abusive or inhumane or detrimental to the wellbeing, welfare and natural rights of any equine.
- Because The British Skewbald and Piebald Association is strongly opposed to any animal abuse, any Member or Judge convicted in a Court of Law of cruelty to animals may be suspended from the BSPA when certified evidence is presented to the Council. They may at the completion of their Court sentence re-apply for membership.
- The Association supports the development of procedures that assure equity, fairness, safety, health and welfare for all participants.

BSPA JUDGES PANEL 2014

Application to join the Judges Panel should be made via written application and a completed equestrian CV to BSPA, Stanley House, Silt Drove, Tipps End, Welney, Cambridgeshire PE14 9SL

The Judges List will be renewed annually and serving Judges are requested to confirm their details or vary information by 1st September annually. **Judges must be BSPA Members.**

All owners, co-owners (or leaseholders/loanees) and anyone who either rides or leads any Horse/Pony all need to be members in order to qualify for for RIHS, WCC or Winter Championships and horses/ponies must be registered and in possession of a 2013 Qualification Card.

BSPA Judging Criteria

PANEL JUDGES ARE EXPECTED TO JUDGE WITHIN THESE CRITERIA AND GUIDELINES as follows:

IN HAND

Best Colour and Markings	90% colour and markings, including Overo & Overo marked 10% judge's discretion
Best Skewbald and Piebald	80% conformation and type characteristics, including Overo/Overo Marked 20% colour and markings.
Type, Weight and Breeding Classes	90% conformation and type characteristics 10% colour and markings.

RIDDEN CLASSES

Ridden Skewbald and Piebald.	40% conformation and type characteristics 60% Ride, performance, manners and display
Working Hunters. 70/30% as	50% Jumping 10% Style and manners whilst jumping 10% Manners whilst performing individual show, Judge's ride and or Final Ride Round 30% Conformation and type.

Whenever judges experience difficulty separating individual entries to achieve a final placing, having used the above criteria, then the BSPA require that **Colour and Markings** become the deciding factor in order to achieve a result.

JUDGING COLOUR AND MARKINGS CLASSES

These Classes are to be judged only on the colour and markings of the horse or pony, conformation does not play a part in the judging procedure and entrants should not be trotted up to look at conformation or movement, this does not matter in this class.

A Colour and Markings Class should be judged 90% colour and markings, 10% judge's choice (which may differ from judge to judge, so if you have won under one judge you may not under another).

Colour patterns should be valued equally, Tobiano or Overo, blue eyes should not be penalised (a Special Award for the Best Blue Eyes may be given in some Colour and Markings Classes).

Entrants should be viewed from both sides, back and front, and should be asked to change the rein so the judge may view them from both sides. The line up should have plenty of room left between exhibits so the judge may walk between exhibits freely.

What a judge should be looking for:

1. A good depth of bold colour, clearly defined blocks of colour (no base colour should be preferred, i.e. black preferred to bay or chestnut etc).
2. A good even distribution of colour on both sides of the animal.
3. Mirror markings, i.e. the same coat pattern both sides of the animal is desirable.

DEFINITIONS:

Home Produced Classes: These classes are open to horses and ponies that have been stabled at home (without any paid assistance) or kept at livery on a DIY basis since 1st January 2013.

Horses/ponies must not have been shown or trained by a professional Producer or kept at full livery at any time during this period (except for service in the case of Brood Mares). To be owned/kept, produced, ridden/handled by a person who does not derive their main income from working with horses/ponies. It is anticipated that exhibitors will enter in the true spirit of this competition.

Amateur Classes: These classes are restricted to exhibitors who do not:

- a) Engage in breeding, livery, buying, selling or dealing in a commercial capacity.
- b) Receive remuneration for employment in the connection with horses in racing, showing, livery or riding school.
- c) Show a horse/pony owned or sponsored by a company or commercial firm.
- d) On the day when an exhibit is competing in an Amateur class, Professionals are not allowed to ride or work on the relevant animal. No Professional Producers are allowed into the ring to groom/strip the horse.

SPECIAL AWARDS

MEMBERS AWARDS

If you are the highest placed BSPA member in any BSPA Affiliated Class you are eligible for your BSPA Members Award.

Only one per season may be claimed.

Send a copy of your signed Qualification Card + strong C5 SAE (large letter stamp) to the BSPA Office.

AMATEUR ROSETTE

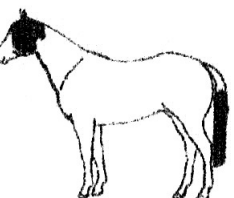
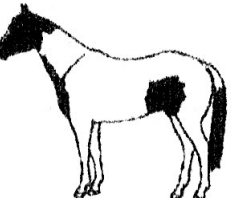
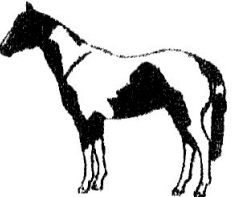
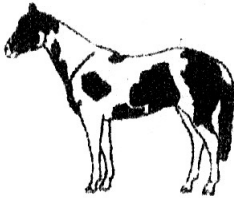
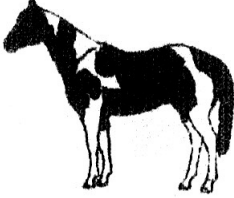
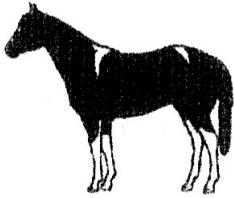
You may claim your Amateur Award (one per season) by sending the Amateur Section on your RIHS or WCC Card signed by the judge (to confirm you were in a qualifying position) to BSPA Office with a C5 envelope, £1 stamp attached.

BSPA REQUIREMENTS FOR COLOUR

- ❖ The ideal skewbald or piebald possesses a colour distribution of 50/50 colour and white markings, however acceptable patterns range from the predominantly white to the predominantly dark coat.
- ❖ The colour must be distributed on the body above the elbow and stifle, markings exclusively on the face in isolation are not acceptable.
- ❖ Only natural markings visible from standing position and at a distance of 10ft (3m) are acceptable. The lesser of the two colours shall meet the minimum requirements of a single patch of colour located on one side of the body covering an area of 15 x 15 cm (approximately the size of a saucer) is the minimum requirement for acceptance and must be accompanied by two or more of the listed markers:–
 1. The presence of colour to or above the hock and knee on two or more limbs.
 2. One or two blue, or partially blue eyes. The eye may also be surrounded by white (pigeon eye).
 3. Apron face (white extending to include the eyes and beyond the jaw line)
 4. White on jaws.
 5. Pink lower lip.
 6. Two-coloured mane or tail.
 7. White under the belly.
 8. Pink skin under white hairs and/or blue zone between white hair and any other colour present.
 9. The offspring of Homozygous Stallions or mares that have been tested by a recognised Genetic testing laboratory either in the USA or UK and who have documentation to uphold their claim.
- ❖ Light or dark skin will only be taken into account in the case of a grey and white skewbald whose markings have faded.
- ❖ Tovero – A cross between Overo and Tobiano coat patterns. Must be proven by documented breeding details of parents.
- ❖ Tricolour – very rare – must have patches of three colours on the body, white or black in the mane or tail or where white markings meet any other colour and create “halos” of a different colour do not constitute a tricolour.
- ❖ Any equine in possession of a registration certificate from the American Paint Horse Association (APHA) confirming its status as a paint horse is acceptable.
- ❖ A test may be carried out for the presence of the Tobiano/Overo gene – this will be done at the applicants expense.

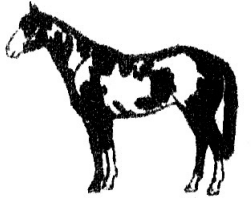
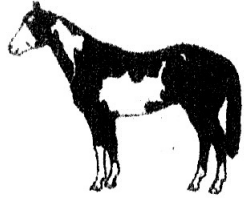
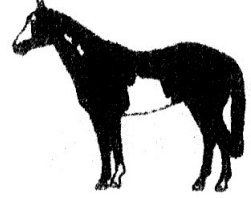
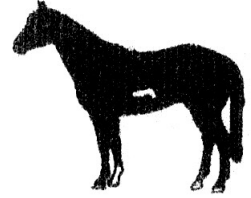
A template is available on request with which you may measure the minimum coloured area requirement.

MARKING TYPES AND PATTERNS



THE TOBIANO

The pictures on the left show variations of the Tobiano pattern. Tobiano is the genetically dominant pattern and only occurs when at least one of the parents is a tobiano. The tobiano is basically a white horse with patches of colour. It generally has white legs and white crossing the backline. The head, chest, flank, buttock and often the tail are usually the coloured areas. A variation of the tobiano pattern is the predominantly dark horse with white markings on the neck and/or shoulder and/or buttock. Different coloured eyes, e.g. one brown and one blue eye are commonly found, but this is not always present.



THE OVERO

The pictures on the right show variations of the Overo pattern. The Overo pattern is the recessive pattern and may occur from the mating of two apparently solid coloured parents which are recessive carriers of this gene. These parents usually have some sort of white markings on the legs or face such as: belly splash, chin spot, jagged white cannon markings.

NOTES ON MEMBERSHIP PASSPORTS AND HORSE REGISTRATION WITH THE BRITISH SKEWBALD AND PIEBALD ASSOCIATION

FEES (at time of printing) please ✓ **and enclose the appropriate registration fee.**

BSPA processing times: Please allow 21 working days to complete applications. If data is incorrect, missing or ineligible this will extend the timescale and may lead to all paperwork being returned.

HORSE PASSPORTS AND REGISTRATIONS

Passports are issued to both BSPA Members and non-members.

For Passports to be issued and to register the horse/pony for Affiliated competition you **MUST** send the following items:-

- A fully completed application form giving as much information as possible. Please do not leave a blank, use n/k. Write clearly and fill in **ALL SECTIONS**.
- Ensure you send two photographs of the horse side on. this is very important for positive identification and our records.
- An original dual language sketch sheet signed and stamped by the Vet completing it (not necessary for over-stamping)
- **Verified Breeding** – send all of the above + a BSPA or other Breed Society Covering certificate, DNA fee as appropriate, copy of dam line or other society stallion pedigree certificates or print outs with stud book references and book numbers. **DNA REQUIRED.**
- **Verified Breeding** – first generation Mare. Send any of the above as appropriate + photograph of the Mare & foal and a photocopy of the original non BSPA Passport for the Mare. BSPA registered Mares need only the photograph + Registration Number. **DNA REQUIRED.**
- Recorded Delivery Postage – Please send an additional £4 if you require your documents returned by RD.
- Membership numbers must be quoted.

BSPA MEMBERS:

- VB Foals under age of six months + BSPA covering certificate - £25 Older than six months + BSPA covering certificate - £40 + DNA
- VB Foals under age of six months; without BSPA covering certificate - £40 Older than six months without BSPA covering certificate - £60 + DNA

NON BSPA MEMBERS:

- VB Foals under age of six months + BSPA covering certificate - £45
- VB Foals over age of six months + BSPA covering certificate - £60 + DNA
- VB Foals any age without BSPA Covering certificates £60 + DNA

DNA Parentage testing is required for all foals over six months old (from 1 Jan annually) including foals conceived by AI or embryonic transfer, with a covering certificate from any breed society incl. BSPA. DNA fee £45 to be sent to BSPA in addition to above fees.

- Horse Registration/Identity Passport over-stamp - £25 + BSPA Membership required
- Horse Registration/VB Passport over-stamp - £25 + BSPA Membership required
- Skewbald/Piebald Unverified Breeding Identity Passport - £25
- Skewbald/Piebald Unverified Breeding Identity Passport upgrade to Verified Breeding - £50 + DNA Parentage test
- Skewbald/Piebald Unverified Breeding Identity Passport upgraded at Grading - £20
- BSPA Regulation Basic ID Passport (RBID) upgrade to Full Passport - £20 Please
- BSPA Regulation Basic ID Passport (RBID) – Member £20, non-member £30
- Duplicate Lost Passports: first issue £50. Subsequent issues £100
- Prefix first application fee £45 Prefix extended to BSPA fee £20

NOTES ON MEMBERSHIP PASSPORTS AND HORSE REGISTRATION WITH THE BRITISH SKEWBALD AND PIEBALD ASSOCIATION

ANNUAL MEMBERSHIP FEES

- Family Membership 2 Adults & 2 Juniors - £100.00
 - Senior Showing - £40 (18 years and older at 1st January)
 - Senior Pensioner - £28 (proof of age required)
 - Junior Showing - £28 (under 18 years at 1st January – send copy Birth Certificate)
 - Children under 10 yrs - Free (d.o.b. required)
 - BSPA Judge - £25 competing in BSPA Affiliated Classes £30
 - RIHS card - £20
 - WCC Q card - £6
 - Amateur card - £3
 - Home produced - Free
 - Express turn a round - £60 + standard fees - cash, postal order or banker's draft only
 - Recorded Delivery Postage - £4 + standard fees
 - Royal Mail Special Delivery - £6 + standard fees
 - Joining fee or late renewal from 1st March + £10
 - Postage EU + £5 other + £10 above standard fees not GB (not required for UK)
 - BSPA Badge - £4.50
 - Company membership - to include the company's registered address and a named representative - £100.00.
 - Life membership - £300.
 - Company Membership - to include 1 Senior Membership - £100.00
- Membership runs from 1st January to 31st December annually

PAYMENT METHODS

Memberships and Registrations will be suspended if cheques payable to the British Skewbald and Piebald Association (BSPA) for any service, are not honoured by the bank, or stopped without prior arrangement, or if there are any monies outstanding to the BSPA that remain unpaid. A surcharge of £20 will be charged if cheques have to be represented. Cheques that remain unpaid will be required to be covered by a cash payment with an additional charge of £20, all future services will then have to be paid by cash.

Late entries at BSPA Shows – cash payment only will be accepted.

CONTACT BSPA

Letters - BSPA Horse Registration & Membership Office, BSPA, Stanley House, Silt Drove, Tipps End, Welney, Cambs PE14 9SL. Tel: 01354 638226. Mobile: 074111 21106
Email: bspashows@aol.com - www.bsponline.com

BSPA Office closed on Mondays.

BSPA REGIONS

Region 1 NORTH –	Cleveland, Durham, Cumbria, Northumberland, Tyne and Wear
Region 2 YORKSHIRE –	North, South and West Yorkshire and Humberside
Region 3 NORTH WEST –	Cheshire, Greater Manchester, Lancashire, Merseyside, Isle of Man
Region 4 EAST MIDLANDS –	Derbyshire, Leicestershire, Lincolnshire, Nottinghamshire
Region 5 WEST MIDLANDS –	Herefordshire, Shropshire, Staffordshire, Warwickshire, West Midlands, Worcestershire
Region 6 EASTERN –	Cambridgeshire, Essex, Norfolk, Suffolk
Region 7 LONDON –	Greater London, Middlesex, Berkshire, Surrey
Region 8 SOUTH EAST COASTAL –	Kent, East & West Sussex, Hampshire, Isle of Wight
Region 9 CENTRAL SOUTHERN –	Bedfordshire, Buckinghamshire, Hertfordshire, Oxfordshire, Northamptonshire
Region 10 SOUTH WEST –	Avon, Cornwall, Devon, Dorset, Gloucestershire, Wiltshire, Somerset
Region 11 SCOTLAND	
Region 12 WALES	
Region 13 NORTHERN IRELAND	
Region 14 OVERSEAS	

JMB INFORMATION (HEIGHT CERTIFICATE) KEY FEATURES OF THE SCHEME

For Ridden Ponies competing in BSPA RIHS Classes only

- All horses and ponies must have at least one Annual certificate before they can have a Full Certificate
- Animals aged 4, 5 and 6 yrs can only have Annual certificates that expire on 31st December
- Measurements are carried out by Official Measure
- Measurements are carried out on Registered Measuring Pads with shoes removed
- Consecutive measurements must be done by different measurers
- The measurer for a Full certificate must be from a different practice from the measurer for the last Annual certificate
- A Re-measurement procedure can be used to settle doubts about accuracy

No JMB required for Shetland Ponies

Secretariat: Paula M Robinson; Howard C Robinson BVSc, MRCVS

The Joint Measurement Board Ltd, PO Box 322, Horley, RH6 0WS

Tel: 01293 862101; Fax: 01293 863302

Email: admin@thejmbonline.co.uk; Website: www.thejmbonline.co.uk

METRIC CONVERSION TABLE FOR MEASUREMENT HEIGHT

<i>Cms</i>	<i>Hand and inches</i>	<i>Cms</i>	<i>Hand and inches</i>	<i>Cms</i>	<i>Hand and inches</i>	<i>Cms</i>	<i>Hand and inches</i>
111.8	11h.	124.8	12h. 1 ¹ / ₈ in.	137.8	13h. 2 ¹ / ₄ in.	150.8	14h. 3 ³ / ₈ in.
112.1	11h. 1 ¹ / ₈ in.	125.1	12h. 1 ¹ / ₄ in.	138.1	13h. 2 ³ / ₈ in.	151.1	14h. 3 ¹ / ₂ in.
112.4	11h. 1 ¹ / ₄ in.	125.4	12h. 1 ³ / ₈ in.	138.4	13h. 2 ¹ / ₂ in.	151.5	14h. 3 ⁵ / ₈ in.
112.7	11h. 3 ⁸ / ₁₆ in.	125.7	12h. 1 ¹ / ₂ in.	138.7	13h. 2 ⁵ / ₈ in.	151.8	14h. 3 ³ / ₄ in.
113.0	11h. 1 ¹ / ₂ in.	126.0	12h. 1 ⁵ / ₈ in.	139.1	13h. 2 ³ / ₄ in.	152.1	14h. 3 ⁷ / ₈ in.
113.4	11h. 5 ⁸ / ₁₆ in.	126.4	12h. 1 ³ / ₄ in.	139.4	13h. 2 ⁷ / ₈ in.	152.4	15h.
113.7	11h. 3 ⁴ / ₈ in.	126.7	12h. 1 ⁷ / ₈ in.	139.7	13h. 3 in.	152.7	15h. 1 ¹ / ₈ in.
114.0	11h. 7 ⁸ / ₁₆ in.	127.0	12h. 2 in.	140.0	13h. 3 ¹ / ₈ in.	153.0	15h. 1 ¹ / ₄ in.
114.3	11h. 1 in.	127.3	12h. 2 ¹ / ₈ in.	140.3	13h. 3 ¹ / ₄ in.	153.4	15h. 3 ⁸ / ₁₆ in.
114.6	11h. 1 ¹ / ₈ in.	127.6	12h. 2 ¹ / ₄ in.	140.7	13h. 3 ³ / ₈ in.	153.7	15h. 1 ¹ / ₂ in.
114.9	11h. 1 ¹ / ₄ in.	128.0	12h. 2 ³ / ₈ in.	141.0	13h. 3 ¹ / ₂ in.	154.0	15h. 5 ⁸ / ₁₆ in.
115.3	11h. 1 ³ / ₈ in.	128.3	12h. 2 ¹ / ₂ in.	141.3	13h. 3 ⁵ / ₈ in.	154.3	15h. 3 ⁴ / ₈ in.
115.6	11h. 1 ¹ / ₂ in.	128.6	12h. 2 ⁵ / ₈ in.	141.6	13h. 3 ³ / ₄ in.	154.6	15h. 7 ⁸ / ₁₆ in.
115.9	11h. 1 ⁵ / ₈ in.	128.9	12h. 2 ³ / ₄ in.	141.9	13h. 3 ⁷ / ₈ in.	154.9	15h. 1 in.
116.2	11h. 1 ³ / ₄ in.	129.2	12h. 2 ⁷ / ₈ in.	142.2	14h.	155.3	15h. 1 ¹ / ₈ in.
116.5	11h. 1 ⁷ / ₈ in.	129.5	12h. 3 in.	142.6	14h. 1 ¹ / ₈ in.	155.6	15h. 1 ¹ / ₄ in.
116.8	11h. 2 in.	129.9	12h. 3 ¹ / ₈ in.	142.9	14h. 1 ¹ / ₄ in.	155.9	15h. 1 ¹ / ₂ in.
117.2	11h. 2 ¹ / ₈ in.	130.2	12h. 3 ¹ / ₄ in.	143.2	14h. 3 ⁸ / ₁₆ in.	156.2	15h. 1 ¹ / ₂ in.
117.5	11h. 2 ¹ / ₄ in.	130.5	12h. 3 ³ / ₈ in.	143.5	14h. 1 ¹ / ₂ in.	156.5	15h. 1 ⁵ / ₈ in.
117.8	11h. 2 ³ / ₈ in.	130.8	12h. 3 ¹ / ₂ in.	143.8	14h. 5 ⁸ / ₁₆ in.	156.9	15h. 1 ³ / ₄ in.
118.1	11h. 2 ¹ / ₂ in.	131.1	12h. 3 ⁵ / ₈ in.	144.1	14h. 3 ⁴ / ₈ in.	157.2	15h. 1 ⁷ / ₈ in.
118.4	11h. 2 ⁵ / ₈ in.	131.4	12h. 3 ³ / ₄ in.	144.5	14h. 7 ⁸ / ₁₆ in.	157.5	15h. 2 in.
118.7	11h. 2 ³ / ₄ in.	131.8	12h. 3 ⁷ / ₈ in.	144.8	14h. 1 in.	157.8	15h. 2 ¹ / ₈ in.
119.1	11h. 2 ⁷ / ₈ in.	132.1	13h.	145.1	14h. 1 ¹ / ₈ in.	158.1	15h. 2 ¹ / ₄ in.
119.4	11h. 3 in.	132.4	13h. 1 ¹ / ₈ in.	145.4	14h. 1 ¹ / ₄ in.	158.4	15h. 2 ³ / ₈ in.
119.7	11h. 3 ¹ / ₈ in.	132.7	13h. 1 ¹ / ₄ in.	145.7	14h. 1 ³ / ₈ in.	158.8	15h. 2 ¹ / ₂ in.
120.0	11h. 3 ¹ / ₄ in.	133.0	13h. 3 ⁸ / ₁₆ in.	146.1	14h. 1 ¹ / ₂ in.	159.1	15h. 2 ⁵ / ₈ in.
120.3	11h. 3 ³ / ₈ in.	133.4	13h. 1 ¹ / ₂ in.	146.3	14h. 1 ⁵ / ₈ in.	159.4	15h. 2 ³ / ₄ in.
120.7	11h. 3 ¹ / ₂ in.	133.7	13h. 5 ⁸ / ₁₆ in.	146.7	14h. 1 ³ / ₄ in.	159.7	15h. 2 ⁷ / ₈ in.
121.0	11h. 3 ⁵ / ₈ in.	134.0	13h. 3 ⁴ / ₈ in.	147.0	14h. 1 ⁷ / ₈ in.	160.0	15h. 3 in.
121.3	11h. 3 ³ / ₄ in.	134.3	13h. 7 ⁸ / ₁₆ in.	147.3	14h. 2 in.	160.3	15h. 3 ¹ / ₈ in.
121.6	11h. 3 ⁷ / ₈ in.	134.6	13h. 1 in.	147.6	14h. 2 ¹ / ₈ in.	160.7	15h. 3 ¹ / ₄ in.
121.9	12h.	134.9	13h. 1 ¹ / ₈ in.	148.0	14h. 2 ¹ / ₄ in.	161.0	15h. 3 ³ / ₈ in.
122.2	12h. 1 ¹ / ₈ in.	135.3	13h. 1 ¹ / ₄ in.	148.3	14h. 2 ³ / ₈ in.	161.3	15h. 3 ¹ / ₂ in.
122.6	12h. 1 ¹ / ₄ in.	135.6	13h. 1 ³ / ₈ in.	148.6	14h. 2 ¹ / ₂ in.	161.6	15h. 3 ⁵ / ₈ in.
122.9	12h. 3 ⁸ / ₁₆ in.	135.9	13h. 1 ¹ / ₂ in.	148.9	14h. 2 ⁵ / ₈ in.	161.9	15h. 3 ³ / ₄ in.
123.2	12h. 1 ¹ / ₂ in.	136.2	13h. 1 ⁵ / ₈ in.	149.2	14h. 2 ³ / ₄ in.	162.2	15h. 3 ⁷ / ₈ in.
123.5	12h. 5 ⁸ / ₁₆ in.	136.5	13h. 1 ³ / ₄ in.	149.5	14h. 2 ⁷ / ₈ in.	162.6	16h.
123.8	12h. 3 ⁴ / ₈ in.	136.8	13h. 1 ⁷ / ₈ in.	149.9	14h. 3 in.		
124.1	12h. 7 ⁸ / ₁₆ in.	137.2	13h. 2 in.	150.2	14h. 3 ¹ / ₈ in.		
124.5	12h. 1 in.	137.5	13h. 2 ¹ / ₈ in.	150.5	14h. 3 ¹ / ₄ in.		

SECTION A – GUIDELINES, RULES AND REGULATIONS FOR JUDGES AND SHOW SECRETARIES

NO MOBILE TELEPHONES TO BE USED IN THE RING.

1. **ALL** affiliated shows **MUST** select judges from the BSPA Panel, in order to hold qualifying classes. It is encouraged that probationer judges or those unable to judge qualifiers are invited whenever possible to assist senior judges. **Apprentice riding judges are permitted to assist non-riding judges in Ridden Horse classes but should carry their own insurance.**
2. **Judges** - are normally expected to ride ALL horse exhibits in a **Ridden Horse class**. Certain judges are 'non-riding'; under these circumstances a display is acceptable.
3. **Ponies** - **MUST NEVER** be ridden in any pony class. No spurs in pony classes. 153cms and under.
4. **Ridden Horse/Pony classes** - in combined classes **NO** exhibit will be ridden by the judge. No spurs may be worn by any competitor.

Championships: If an exhibit has qualified from a horse class then spurs may be worn.

5. **JUDGES** - may refuse to ride any exhibit they deem to be unsafe, badly behaved or ill prepared. In these circumstances the exhibits may not be placed and may be asked to leave the ring at the Judges discretion.

6. **Exhibitors** – wishing to leave the ring prior to the end of any class **MUST** ask the judge's permission before doing so.

7. **JUDGES PLEASE NOTE: In Qualifying classes and Championship Shows, No horse/pony (ridden) may enter the ring or compete in any class once that class has commenced trotting and no horse/pony (in hand) may enter the ring and compete at the show in any class once the initial trot-up has commenced.**

8. **FALLS** – A fall of any horse/pony or rider in any Working Hunter or ridden class will result in disqualification except in case where the awards have already been presented. Under these circumstances the rider must leave the arena un-mounted. Competitors may only continue to compete at the show following examination from either paramedic or first aid in attendance and entirely at their own risk. **Health Safety and Welfare considerations apply.**

9. **A Rider** whose hat comes off or strap comes undone whilst competing must on penalty of disqualification/elimination replace it or fasten it before continuing. The rider may dismount without penalty to recover the hat or have it passed up from the ground or they may stop without penalty to fasten the strap. **JUDGES must have full regard for Health and Safety of the competitor and the rest of the class whilst these actions take place.**

10. **Judges** - are asked to use their discretion and **NOT** accept to judge the same qualifying classes at **consecutive** shows in the same area, or more than 2 shows in the same area. **For RIHS only three Qualifiers may be judged per season and should be at least 100 miles apart.** One qualifying class may be accepted for 2015.

11. JUDGES - SELECTED TO JUDGE THE RIHS CHAMPIONSHIP; HICKSTEAD SHOULD NOT JUDGE ANY QUALIFIERS IN THAT SEASON PRIOR TO THE FINAL.

12. **Judges** - **NO BSPA. Council member** may judge a RIHS Qualifier or the Championship unless there are circumstances beyond the control of the BSPA.

13. **Judges** - should not make any audible derogatory comment or remark concerning any exhibit brought before them or compare/contrast the animals conformation, performance, or ride with any other exhibitor or animal known to them

14. **Judges** - **MUST** ensure that all exhibits are judged on their own performance, manners and qualities **ON THE DAY** and not be influenced by any previous performance either in a previous class or at another competition.

15. **Judges** - should ensure that horses/ponies are stripped for conformation examination whenever possible. For RIHS Qualifiers this must always be done.

16. **Numbers forward** - (Ridden/W.H.) Where these are very large or the scheduled time is limited, it is **ESSENTIAL** for judges to see exhibits trotted towards and away from them.

17. **Galloping** - is an essential part of a Working Hunter/WHP and Show Hunter/Hunter Pony performance, ground conditions should be taken into consideration.

18. **Judges** - must **NOT** ask the breeding of any exhibit and/or be given a copy of the show catalogue prior to the completion of the Winter or Summer Championship shows.

SECTION A – GUIDELINES, RULES AND REGULATIONS FOR JUDGES AND SHOW SECRETARIES (continued)

19. Exhibitors - are required to withdraw from a class if the judge has an interest in his/her exhibit. For the purpose of this rule a conflict of interest is defined as.

A judge has an interest in an exhibit if he/she has owned, trained, kept it at livery or ridden it in any competition. Or has had or still has a financial interest or gain from it, or has bred it, or who's stallion whilst in their ownership/control, has sired it.

20. Judges - must not knowingly judge any rider who has shown a horse belonging to him/her, or produced by him/her, during the current season or for whom the judge has ridden/produced any exhibit since 2011.

21. Judges - May not judge at the same show they are exhibiting. May not judge animals owned by relatives or business partners. May not judge past or present employees or persons who have ridden/exhibited/produced their animals. May not judge persons who they have given individual lesson on a one to one basis – group lessons or training days with six or more students is acceptable.

22. Judges - are required to give particular attention to manners whilst judging. If a judge considers an exhibit to be ill mannered, even on its second or Championship appearance, it should affect the final placing. This WILL also apply to Supreme Championships.

23. A Judge - should not be an exhibitor, trainer, producer or rider at any show at which he/she is judging in any class on the same day. **Probationary judges included.**

24. RIHS JUDGES - ALL Judges for the Royal International MUST be selected from the BSPA RIHS panel

25. Judges - may not judge at more than three RIHS qualifiers in any one year. Shows must be at least 100 miles apart. It is the judge's responsibility to inform Show Secretaries of appointments.

25A. Judges Travelling Fees/Expenses - Shows should pay Judges reasonable travelling expenses. The amount to be agreed **prior** to the event. It is recommended 30p per mile.

25B. The BSPA reserves the right to alter a Judges classification. All judges are appointed annually

26. THE JUDGE'S DECISION IS FINAL.

27. Rider change - Once a class has commenced, there shall be no change of rider except in a Championship class, when any exhibitor has more than one exhibit eligible to compete. **No horse or rider may leave the ring, except with the permission of the judge.**

27B. Wet weather clothing may only be worn in the ring with the Show Secretary's and Judge's permission

27C. Riding Jackets must be worn at all times in the Ring, when mounted.

27D. All riders in horse/pony classes must be present for all elements of judging, final walkround and award presentation, failure to do so will result in disqualification. (For Championships see page 21, Rule 62).

28. Riders - Must compete in all phases including the in-hand section, unless the rider has obtained a dispensation card prior to the event. Dispensation cards are available at no cost for those riders with injury/disability, a medical certificate/letter must be provided. In RIHS classes the person elected to perform the in-hand section must be a member of BSPA.

29. Exhibitors - are still under the judge's jurisdiction until asked to leave the line after rosettes have been presented.

30. Name of horse - Once registered with the BSPA all entries must conform to the registered name only.

30A. The identification of horses and ponies registered with BSPA must be in accordance with the sketch in the horse or pony's passport. Markings must not be enhanced, covered up, or covered in excessive make-up. Those breaking this rule will not be allowed to compete. Please note exhibitors are required by DEFRA to carry with them passports for all animals when competing and/or travelling.

30B. No horse/pony name may be changed. All exhibits must be entered under the name that appears on the Passport and the name that it has been registered under with BSPA. The JMB Certificate must be in the same name as that on the horse/ponies Passport. The BSPA may refuse to register/passport any horse/pony with a name they deem inappropriate

31. Prefix - All prefixes must be registered with the BSPA in order for these to be used in entries & the National Show Catalogue. **Prefix Rules** - Prefix information at www.centralprefixregister.com

BSPA is affiliated to the Central Prefix Register (CPR), an organisation set up in 1978 by the British Palomino Society in order to prevent duplication of breeders' prefixes by different breed societies. By the use of a registered prefix, a breeder may derive credit and advertisement from winning stock. Registered

SECTION A – GUIDELINES, RULES AND REGULATIONS FOR JUDGES AND SHOW SECRETARIES (continued)

prefixes are protected from duplication within the other affiliated breed societies, except where a duplicate is presented at the time of a breed society affiliating to CPR. When duplicates arise, they may be changed free of charge. If you are a breeder, and wish to register a prefix/suffix, please send an SAE to BSPA Office for a Prefix Application Form. You will need to submit three choices of between 3 and 25 characters with no spaces, apostrophes or hyphens, together with the current fee. Prefixes must be registered in the name of the principal owner with additional secondary owners so that, in the event of any dispute, the title remains with the principal owner. Once registered, your prefix may be extended for use with other breed societies for the current fee. All societies concerned must be notified of any changes and it is highly recommended that an heir be named. In the event of your death when no heir is named the prefix will be frozen for a period of 10 years. **A prefix may only be used on stock you have bred NOT bought in.**

32. Substitution National and Winter Championships - Only qualifying horses/ponies may enter the National Championships unless for a demonstration or feature class. Any class not requiring this pre-qualification will be so marked within the Championship Schedule. No substitution of horses/ponies will be allowed once closing date expired.

32A. Substitution of rider/handler - The substitution of any rider/handler at a Qualifier/the National Championships or the Royal International Horse Show: It is the responsibility of the owner(s) to ensure that any substituted rider or handler is a member of the BSPA. Membership cards must be carried. Failure to comply with this will result in either the loss of qualification or disqualification. In these circumstances all prize-money will be forfeited.

33. Doping and Dope Tests - Warning to Members, Owners and Producers of Horses Competing under the Association's Show Regulations - In common with other similar bodies, the Association takes a very serious view of doping, whether intentional or unintentional. Members, owners and producers should be aware that many proprietary feeds and preparations contain Prohibited Substances as do many foods such as chocolate. The presence in any form or quantity, in a horse being shown, of a substance which could, by its nature, affect its performance, is forbidden. The Association may cause tests to be carried out at any affiliated show on a random basis. The specific rules with regard to doping and dope tests are set out below and any breach thereof constitutes a breach of the General Rules.

The Association does not specify threshold levels for any Prohibited Substances but will have regard to those published by the Jockey Club from time to time without being bound by them. Feeds and preparations are available which are guaranteed to comply with Jockey Club doping rules. Prohibited Substances can be absorbed through the skin and they are also contained in some homeopathic and herbal remedies. It is the responsibility of the person having custody of a horse, to ensure that nothing is fed, administered or applied to a horse that contains a Prohibited Substance. Ignorance is not a adequate defence.

Prohibited Substances "Prohibited Substance" means a substance originating externally whether or not it is endogenous to the horse which falls into any of the categories contained in the List of Prohibited Substances published from time to time in the Racing Calendar.

"Substance" includes the metabolites of the substance and the isomers of the substance and metabolites.

List of Prohibited Substances. Substances capable at any time of acting on one or more of the following mammalian body systems:

- The nervous system
- The cardiovascular system
- The respiratory system
- The digestive system
- The urinary system
- The reproductive system
- The musculoskeletal system
- The blood system
- The immune system except for licensed vaccines
- The endocrine system
- Endocrine secretions and their synthetic counterparts
- Masking Agents

For the purposes of clarity Prohibited Substances include:

SECTION A – GUIDELINES, RULES AND REGULATIONS FOR JUDGES AND SHOW SECRETARIES (continued)

Anti-pyretics, analgesics, and anti-inflammatory substances
Cytotoxic substances
Antihistamines
Diuretics
Local anaesthetics
Muscle relaxants
Respiratory stimulants
Sex hormones, anabolic agents and corticosteroids
Substances affecting blood coagulation

Rules

a) Doping and Dope Tests

- 1) Any horse present on the showground and entered for a class whether exhibited or not will be liable to dope testing in accordance with the dope testing procedure laid down by this Rule. An official appointed by the Association officiating at the show in question shall determine which horse(s) should be tested. A refusal to submit a horse for dope testing shall constitute a breach of this Rule. The BSPA reserves the right to retest any animal at any BSPA Show.
- 2) the presence in the tissues, body fluids, excreta, hair or skin of a horse of a Prohibited Substance (as hereinafter defined) shall constitute a breach of this Rule.
- 3) "Dope Testing" means the examination of a horse by a duly qualified person appointed by the Association and includes the taking of samples for subsequent analysis of all or any body fluid, tissue, excreta, hair or skin scrapings at the discretion of the person conducting the examination.
- 4) "Prohibited Substances" means any quantity of any substance originating externally (whether or not indigenous to the horse) which could influence the horse's performance or bearing including without limitation stimulants, depressants, tranquillizers, local anaesthetics, anti-inflammatory agents (including phenylbutazone) antihistamines, muscle relaxants, diuretics and metabolites of any such substance or masking agents and such other substance as may be declared a "Prohibited Substance" by the Jockey Club.

b) Sampling Procedure

- 1) Dope Testing should take place as soon as possible after the participation of the horse in its class provided that it does not interfere with its programme in which case the dope test should take place as soon as possible after the horse has completed its programme.
- 2) It is the responsibility of the person in charge of the horse whether it be the Owner or the Producer or other person to supervise the horse from time of notification of selection for a dope test until completion of the dope test. It is also the responsibility of this person to witness the sampling procedure and to sign a declaration to the effect that he/she has witnessed the collection and sealing of the test samples. Refusal or wilful obstruction by any person to submit a horse for sampling or refusal to sign the abovementioned declaration is a violation of the rules and must be reported immediately to the Association and will be subject to the same sanctions as a positive sample result.
All samples taken must be kept in a secure place and dispatched to the laboratory selected by the Association or its representative as soon as reasonably possible after collection.
- 3) The sample must be divided into two parts hereinafter referred to as Sample A and Sample B. The initial analysis will be done by the laboratory on Sample A.
- 4) If the result of analysis of Sample A is positive then the laboratory may forthwith destroy Sample B. The Owner or Producer will be notified within fourteen days of the Association receiving any negative result.
- 5) If the result of analysis of Sample A is positive then the Owner or Producer must be notified in writing by recorded delivery post and may require confirmatory analysis of Sample B provided that a written request for such confirmatory analysis is received by the Association within 14 days of dispatch by the Association of notification of a positive analysis of Sample A.
- 6) The Owner or Producer may request that findings be made in respect of particular matters during the analysis of Sample B on the basis that they will be responsible for all additional costs incurred whatever the result of the analysis of Sample B.
- 7) Upon receipt of a valid request for confirmatory analysis of Sample B, the Association shall inform the laboratory immediately and the laboratory shall carry out the analysis of Sample B.
- 8) If the result of analysis of Sample B is negative then the entire test shall be considered negative.

SECTION A – GUIDELINES, RULES AND REGULATIONS FOR JUDGES AND SHOW SECRETARIES (continued)

- 9) If the result of analysis of Sample A is positive and no valid request for confirmatory analysis of Sample B is received, the Owner shall reimburse the Association the cost of analysis of Sample A forthwith upon demand.
- 10) If the analysis of Sample B is positive then the person requesting the analysis shall reimburse the Association the cost of analysis of Samples A & B forthwith upon demand.
- 11) Any person who administers or attempts to administer or allows one cause to be administered or connives at the administration to a horse of a prohibited substance shall be guilty of a breach of these Rules.

c) Penalties

- 1) If the presence of a Prohibited Substance in the tissues, body fluids, excreta, hair or skin of a horse is confirmed by laboratory analysis carried out pursuant to this Rule then the result of the dope test shall be reported to the Disciplinary Committee and the following penalties shall be automatically imposed:
 - a) The horse shall be disqualified from any class, competition or championship in which it took part on the date of the dope testing and any subsequent class, competition or championship for which it qualified on the date of the dope testing and shall forfeit its placings, awards and prize money.
 - b) The horse shall be suspended from being entered or shown or otherwise taking part in any Affiliated Show pending the outcome of the disciplinary procedure.
 - c) The Owner and Producer of such horse shall be suspended from all or any of the rights and privileges of membership of the Society pending the outcome of any disciplinary procedure.
 - d) Any period of automatic suspension under this Rule shall commence on the date of receipt of notice of a positive dope test by the Owner or Producer by recorded delivery post.
- 2) All samples taken must be kept in a secure place and dispatched to the laboratory selected by the Society as soon as reasonably possible after collection.
- 3) The sample must be divided into two parts hereinafter referred to as Sample A and Sample B and the initial analysis of Sample A must be completed within 21 days of receipt of the sample by the laboratory. If the initial analysis produces a suspicious positive result then the Association may grant such extension as the laboratory requires to complete the analysis.
- 4) If the result of analysis of Sample A is negative then the laboratory may forthwith destroy Sample B. The Owner or Producer will be notified of the result within 14 days.
- 5) If the result of analysis of Sample A is positive then the Owner or Producer may require confirmatory analysis of Sample B provided that a written request for such confirmatory analysis is received by the Association within 14 days of dispatch by the Association of notification of a positive analysis of Sample A.
- 6) The Owner or Producer may request that findings be made in respect of particular matters during the analysis of Sample B on the basis that they will be responsible for all additional costs incurred whatever the result of the analysis of Sample B.
- 7) Upon receipt of a valid request for confirmatory analysis of Sample B, the Association shall inform the laboratory immediately and the laboratory shall carry out analysis of Sample B.
- 8) If the result of analysis of Sample B is positive then the person requesting the analysis shall reimburse the Association the cost of analysis of Sample A and Sample B forthwith on demand.
- 9) If the result of analysis of Sample A is positive and no valid request for confirmatory analysis of Sample B is received, the Owner shall reimburse the Association the cost of analysis of Sample A forthwith upon demand.
 - a) the Disciplinary Committee shall investigate the matter and decide within fourteen days of the date of posting by the Association of notification of a positive dope test to the Owner and/or Producer whether or not to institute disciplinary proceedings for a breach or breaches of this Rule against the Owner and/or Producer.
 - b) If the Disciplinary Committee decides not to institute disciplinary proceedings against any person suspended pursuant to Rule III a)(iii) [above] then such suspension shall cease immediately and if no proceedings are initiated against either the Owner or Producer then the suspension of the horse pursuant to Rule III a)(iii) [above] shall also cease immediately.
 - c) If the Disciplinary Committee decides to institute disciplinary proceedings, the Member, Owner or Producer shall be given notice of such decision and will be entitled to attend with legal representation.

SECTION A – GUIDELINES, RULES AND REGULATIONS FOR JUDGES AND SHOW SECRETARIES (continued)

- 10) Any person who administers or attempts to administer or allows or causes to be administered or connives at the administration to a horse of a prohibited substance shall be guilty of a breach of these Rules and subject to BSPA disciplinary procedure.
- 34. Fired horses** - The BSPA deprecate the showing of fired horses and instruct its judges that it should be considered as a serious blemish and penalised accordingly.
- 35. National Championship Show** - All horses that have been placed 1st, 2nd, or 3rd at any affiliated show or are awarded highest placed awards qualify for the National Championships. Those shows held after the closing date of entries for Championship Show will carry the qualification forward for the next year. ALL qualifying cards MUST be carried into the ring by the rider/handler and signed by the judge. Failure to do this renders qualification invalid.
- 36. Good conduct and discipline** - any member of the Association, who conducts him or herself in a disgraceful manner or brings or attempts to bring the Association into disrepute, may have their membership revoked or be referred to the Disciplinary Sub Committee see BSPA DISCIPLINARY PROCEDURE PAGE 28. Any complaints from affiliated Show Secretaries should accompany the results sheet so that membership details may be checked.
- 37. Disclaimer of liability** - Save for death or personal injury caused by the proven negligence of the BSPA or anyone for whom they are in law responsible. The British Skewbald and Piebald Association, nor any agent, employee or representative of these bodies accepts any liability for any accident, loss, damage, injury or illness to horses, owners, riders, spectators, and or any other person or property whatsoever.
- 38. Public Liability Insurance** is carried by the BSPA who are governed by its Terms and Conditions. ALL competitors and riders/ handlers are strongly urged to carry their own accident insurance cover.
- 39. Blue eyes** - No exhibit with blue eyes should be penalised in any class.

SECTION B – GENERAL SHOWING RULES FOR BSPA SHOWS

NO MOBILE PHONES MAY BE USED IN THE RING

- 40. The BSPA reserves the right at their absolute discretion to refuse applications for Memberships and Show Affiliations.**
- 41. Show Secretaries should do their utmost to inform competitors and the BSPA of any Judge changes.**
- 42. Membership and Horse Registration will be suspended immediately if cheques payable to the BSPA are not honoured by the bank or if there is any money owing to BSPA.**
- Debt or Fines Rule - *Monies due to the BSPA (from whatever circumstance) may at the absolute discretion of the Council, be deducted from payments of prize money outstanding to any member.***
- 43. Correspondence of any kind having insufficient postage may be refused as BSPA will not pay additional postage to receive these items.**
- 44. It is a requirement for Judges to be familiar with BSPA Rules.** (See Rule 25).
- 45A. Spurs** - no spurs/dress spurs may be worn in any Pony or Working Hunter Pony Ridden class or by any adult in a Ridden Pony class. Where combined classes are held (horse/pony) no exhibitor may wear spurs. (see Rule 4)
- 45B.** Spurs must be of Prince of Wales design – and made entirely of metal. Neck of the spur should not exceed 3cms, spurs with rough or cutting edges rowells, or serrated spurs are now allowed. Spurs are to be worn with curve of the neck directed downwards. .
- 46. Show canes** - Whips are not to exceed 30” (75cms). Dressage whips may not be used. In lead rein classes or in-hand classes plain or leather covered canes only may be used.

SECTION B – GENERAL SHOWING RULES FOR BSPA SHOWS – continued

47. Hard hats - must be worn to the approved current BSI standard - refer Schedule, with the exception of evening performance where Bowlers and Top Hats may be worn at riders risk and responsibility. No junior rider under 18yrs at 1st Jan may wear a top hat or Bowler in any Championship or Gala Class **under any circumstances.**

NB: These rules may be superseded by any individual Affiliated Shows own rules refer to their Show Schedule and act accordingly.

NEW ADVANCE INFORMATION STARTING 1/1/2015. All riders when mounted must wear correctly secured British Standard riding hats with 3-point protective headgear which complies to EN1384.PAS015 or PAS Accredited. This applies to riders of all ages. **In Supreme Championships only, top hats/bowlers/beaglers may be worn by riders over 18 years (juniors 18 years and under wear hats with chin straps in all Ridden Championships),**

47B. In-hand classes - No cross nose bands permitted. Junior exhibitors 18 yrs and under competing in In-hand Classes **MUST** wear hard hats with chin straps at all BSPA affiliated shows.

47C. No showjumping style hats in BSPA affiliated classes with the exception of Working Hunters.

48. Snaffle Bridles with plain/cavesson noseband are permitted (without penalty) in all classes. Some classes e.g. Riding Club horse/Novice or 4 year olds may require particular biting arrangements Competitors **must refer to all show schedules for guidance.**

49. Stallions – Only BSPA Graded Stallions may compete in BSPA Affiliated Shows in either World of Colour (WCC) classes or Royal International Horse Show (RIHS). As from 1st January 2013 every competing BSPA Graded Stallion must have a Graded Stallion ID Card which must be carried into the ring and produced on request. Failure to do this will result in disqualification – Stallion Cards may be obtained from the BSPA Office free of charge.

Bridle discs issued by other organisations or societies **MAY NOT** be worn by any dual graded BSPA Stallion when competing in BSPA Affiliated Classes. If you enter the ring with a bridle disc on your stallion you will be asked to remove it. The class will not be held up whilst this task is completed, and you will be disqualified.

50. Boots - are permissible in phase 1 of W.H., or Style and Performance class only. At no other time can a change of saddlery be permitted. Front boots only permitted.

51. Age - Horses and ponies must be four years old and over in all ridden classes. The age should be calculated from 1st January in the year of their birth.

51B. Traditional Cob Yearlings must be shown in their natural state – no clipping out of body hair.

52. Registered Name - a horse/pony must be shown under the name in which it was originally registered. All prefixes must be registered with the BSPA. Otherwise they will be deleted from catalogues.

53. Weights/Classification - Once a horse/pony has been competed within a certain weight (LW MW HW) OR Classification (Native/Non Native) they **MUST** continue in this for the whole of the Season and within any Championships qualified for. Any changes will remain permanent thereafter.

54. Riders Ages - All riders must have attained their 3rd birthday by January 1st, or by the day of the show **stallions** may only be ridden by riders who have attained their 14th birthday by 1st Jan. **RIHS**, Horses exceeding 153cms riders must have attained their 15th birthday by 1st January.

54B. Horse and pony ages taken from 1st January

55. Registration - Horses/ponies must be registered and entered in the name of the legal owner or leasor. Any change of legal ownership of any horse/pony registered with the BSPA. A responsible adult must be the joint owner where juniors are named owners. Public liability issue.

55B. Sales and Changes of Ownership - Change of ownership of horses/ponies with BSPA Passports should be completed within 14 days of purchase by the new owner/s. The appropriate fee must be paid. **Overstamped Passports** - Passports that have been overstamped by BSPA. Changes of ownership should be sent with a copy of the change of ownership page from the original Passport. No cards will be issued unless accompanied by new owner details from the Passport.

56. Stallions/colts - may not be led/ridden by juniors who have not attained their 14th birthday by 1st January annually at any show affiliated to the BSPA.

When juniors (18 yrs or younger) are mounted on stallions, they do so entirely at the owners/parents risk. **Entry is deemed an indemnity for the BSPA.** All mounts must be in the control of the rider at all times

SECTION B – GENERAL SHOWING RULES FOR BSPA SHOWS – continued

and when led. Outside assistance is not permissible.

57. In First Ridden - classes, ponies should not be cantered except in their individual shows.

58. Bits - Animals should be shown in appropriate and suitable bits for their classification. Judges discretion will be applied. Bloody Mouth – in all cases if an exhibits mouth is found to be bloody, at the judges discretion they may be asked to leave the ring.

Running Gags or Bitless/Hackamore Bridles are not permitted.

A) **Novice Classes** - In all Novice Classes horses and ponies **MUST** be shown in a snaffle bridle with a simple cavesson noseband, no martingales are to be worn. The definition of novice is: A horse or pony not to have won more than two firsts or have competed at RIHS or HOYS. This class is designed for young horses and ponies seeking to gain more experience.

B) **Saddles must be worn in all ridden classes.** No seat savers or treeless saddles are permitted

C) **No outside assistance** of any kind is permitted to anyone competing in the ring, In-hand or Ridden, to include radio or transmitting devices.

59. Any abuse of Officers/Officials of the BSPA will result in membership being refused or suspended.

60. Unsportsmanlike Conduct - when an exhibitor, owner, trainer or member is guilty of unsportsmanlike conduct, such person may be subject to disciplinary action by BSPA.

A) Unsportsmanlike or irresponsible conduct or any other form of conduct, that is illegal, indecent, profane, intimidating, threatening, harassing, or abusive is prohibited, as is the inhumane treatment of horses.

B) No Member of the BSPA shall conduct themselves in a manner or be guilty of behaviour which is derogatory to the character or prejudicial to the interests of the BSPA. No Member shall behave in an offensive or abusive or unpleasant manner to any person at any show.

C) Under these circumstances members may be asked to leave the show ground.

Definitions:

- An **Exhibitor** is the owner/lessee/or person who produces and/or shows the pony/horse.
- A **Member** is a fully paid up Member of BSPA.
- A **Producer** is one who undertakes the preparation and/or training of a pony/horse for the Show Ring and receives remuneration.
- A **Trainer** is one who undertakes the preparation and/or training of a rider for the Show Ring and receives remuneration.
- **Children** must be under the control of a responsible adult at all times when at a BSPA show.
- **Exhibitor** - the owner/lessee/or person who produces and or shows the horse or pony.
- **Handler** - a person who exhibits a horse/pony in-hand
- **Rider** - a person who exhibits a horse/pony under saddle.
- **Amateur – The BSPA Ridden Amateur Owner/Producer/Rider Championship**

Open to Mares and Geldings **only**. No Stallions. All Horses or Ponies in this section **MUST** be owned, registered, produced and ridden by the owner or their son/daughter/ grandchild/brother/sister. **Nor** must the exhibitor earn their primary living from a stud or other equestrian or competitive discipline. Nor must they be a trainer or producer for reward or hire. Ponies/Horses **MUST NOT** have been stabled in a livery since 1st January or stabled with a trainer during 2012 except in the case of a Broodmare. **DIY livery is acceptable.** All horses or ponies **MUST** be owned and/or ridden or led by BSPA Members.

- **Home Produced** - open to current members of BSPA with registered horses and ponies that have been continuously stabled at home since 1st November 2013. DIY livery is acceptable providing it is not at the premises of a producer or trainer. Horses and ponies in this section must be owned, produced, and ridden by the owner, their spouse or their son/daughter/grandchild. Those under the instructions of a professional producer are exempt.

61. The class is completed when the judge dismisses the class.

62. Supreme Championships - Where a competitor qualifies more than one exhibit for a Ridden Championship or Supreme Championship, another rider may be substituted for the Championship only. In

SECTION B – GENERAL SHOWING RULES FOR BSPA SHOWS – continued

all other circumstances the catalogue entries **MUST** be retained. Please refer to rule 30a.

Please inform the Show Secretary if you are not competing in a championship.

63. Equitation/Best Rider/ Young Handler - no substitution of rider/ handler is permissible.

64. Handlers and Riders - may only compete with one horse/pony in any one class at any one time. Where a handler qualifies more than one exhibit for a Championship, it is permissible for a substitute handler or Rider to show the horse/pony. All handlers/riders must be BSPA Members.

65. Paint Horses - May be presented in open classes with American style bridles and head-collars and competitor dress (without penalty). When competing in "restricted" Paint classes, all competitors should present themselves in accordance with APHA Rules

66. Part Bred Paint Horses - May be presented in Paint Horse or American Breeds and Types Classes with English Style bridles and competitor dress (at National Championship Shows) without penalty

67. Hats - Competitors are reminded of competitor liability issues when wearing western as opposed to hard hats to BSI Standards. A disclaimer must be signed. For juniors 18 yrs and under - hard hats conforming to BSI standard must be worn.

68. Grooms - All Grooms entering the ring must wait until the whole class has been lined up before entering the ring in a discreet manner. They should approach horses from behind the line up and never walk across the Judges or horses path. Health and safety is of paramount importance.

69. Grooms dress code - It is the exhibitor's responsibility to ensure that Grooms entering the ring are smartly turned out Jackets and hats should always be worn. At BSPA Shows this standard will be enforced. Failure to comply may result in being asked to leave the ring. No visible jewellery may be worn. Refer also Rule C 2-4 Jewellery

Suitable Dress

Male - Hats must be worn: Bowler hats, Caps (no show jumping hats or baseball caps), hard hats. Shirt (tucked in), tie, suit, jacket, trousers, NO DENIM, suitable footwear.

Female - Hats must be worn. Shirt, tie, hacking jacket, trouser suit and suitable footwear, NO DENIM. Equipment must be kept to a minimum.

70. Equipment - Care should be taken to minimise the amount of equipment taken by Grooms into the ring on grounds of Health and Safety.

71. BSPA Rules apply at Shows run by or affiliated to BSPA, unless otherwise stated in the individual shows own rules.

72. The Brightwell Auctioneers Skewbald and Piebald Sports Horse and Pony In-Hand National Championship - These classes are for athletic horses and Ponies that have the conformation and movement to compete in Dressage, Showjumping or Eventing and that have a **verified/proven parentage passport, breeding must be indicated on the entry form.** The three highest places in each class to qualify for the final to be held at the British Skewbald and Piebald association World Championships of Colour. Each Horse/Pony is to be judged individually on a triangle and also walked and trotted round the ring as a class. Marks will be awarded for conformation, walk, trot and overall impression. **Handlers, Owners and Horses/Ponies must be members of the BSPA for qualification to remain valid. These classes are open to BSPA Members with registered Horses/Ponies only.**

BRIGHTWELL AUCTIONEERS SPORTS HORSE YOUNGSTOCK. In-Hand sport horse youngstock Skewbald or Piebald horse or pony colt, filly or gelding any height not exceeding 3 years old (Refer to rules regarding eligibility to enter).

BRIGHTWELL AUCTIONEERS OPEN SPORTS HORSE & PONIES. In-Hand Skewbald or Piebald horse or pony 4–8 years old any height, open to mares, geldings or stallions (stallions must be licensed and graded with the BSPA). (Refer to rules regarding eligibility to enter).

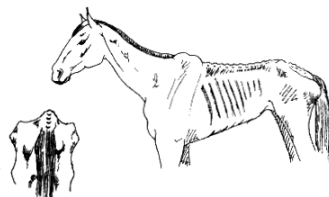
73. Prize Money - Prize money of £50 or more will be sent to exhibitors 28 days following the completion of the show.

74. Equine Obesity - Please see table on page 23 with weight descriptions as recommended by The National Equine Welfare Council. Horses/Ponies in Section 5 may, at the judges discretion, be penalised by a lower placing

Body Fat Guide

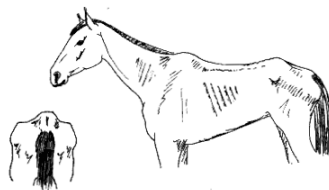
0 – Emaciated

Neck – marked ‘ewe’ neck, narrow and slack at base.
Back and ribs – skin tight over the ribs, ribs very visible. Spinous processes sharp edge and easily seen.
Pelvis – angular pelvis, skin tight, very sunken rump. Deep cavity under tail and either side of croup.



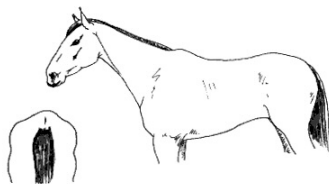
1 – Poor

Neck – ‘ewe’ neck, narrow and slack at base.
Back and ribs – ribs easily visible. Skin sunken either side of backbone. Spinous processes well defined.
Pelvis – rump sunken but skin supple, pelvis and croup well defined, cavity under tail.



2 – Moderate

A fit racehorse should be carrying this amount of fat.
Neck – narrow but firm.
Back and ribs – ribs just visible, backbone well covered. Spinous processes felt.
Pelvis – rump flat either side of backbone, croup well defined, some fat, slight cavity under tail.



3 – Good

Most leisure horses will carry this level of fat.
Neck – no crest (except stallions), firm neck.
Back and ribs – ribs just covered, easily felt. No gutter along back. Spinous processes felt.
Pelvis – covered by fat and rounded, no gutter, pelvis easily felt.



4 – Fat

Neck – slight crest, wide and firm.
Back and ribs – ribs well covered. Gutter along back bone.
Pelvis – gutter to root of tail. Pelvis covered but soft, felt only with firm pressure.



5 – Obese

Neck – marked crest, very wide and firm, folds of fat.
Back and ribs – ribs buried cannot feel. Deep gutter, back broad and flat.
Pelvis – Deep gutter to root of tail, skin distended, pelvis buried, cannot feel.



Adapted from Carroll and Huntingdon (1988, EVJ)

SECTION C

QUALIFICATION REQUIREMENTS for the BSPA World Championships of Colour National Champion of Champions

1. SHOW SECRETARIES

1. **Qualifier** - 1st, 2nd, or 3rd will qualify automatically in all classes unless otherwise agreed. Not affected by numbers forward.
2. **County/Agricultural Shows** - may award additional qualifiers according to numbers entered/forward. Classes of 10-12 qualify to 4th place and classes over 10 qualify 1st-6th.
3. **Additional qualifiers** - are required for the highest placed Traditional/Native, Cob/Vanner or heavyweight or Youngstock as appropriate and Ponies (in combined/open classes). As confirmed in Affiliation Pack data.
- 4a. **Qualification cards** - Must be produced in the ring and signed in the ring by the judge. Show secretaries are particularly asked to make their stewards aware of this rule. ALL Riders/handlers are required to carry these into the ring otherwise qualification becomes invalid.
- 4b. **Membership cards** must be carried at all times and may be required to be produced.
5. **The result sheets** - supplied with the rosettes should be properly completed and returned to the Association at the end of the show together with any surplus rosettes.
6. **Rules** - Classes will be judged within the rules of the BSPA. See pages 8–12 incl.
7. **Required Schedule Wording Skewbald and Piebald** - refer FORMS BSPA SL2 and BSPA SL5 for correct wording.
8. **Broodmares** - Broodmares are so classified when they are either certified in foal, + covering certificates supplied, or are shown with their foal at foot. Barren signifies that they have had a foal(s) but are empty (not in foal) for the show season. No mare can enter a broodmare class unless the above applies.
9. **Broodmares** - may not be shown in any ridden classes. Foals must be four weeks old or above to attend a show.
10. **These rules apply to all qualifying classes in the UK and Eire.**
11. **Public Liability** - Individual members and organisers of Affiliated Shows MUST HAVE Public Liability Insurance.
12. Schedules must be sent for proof reading.
13. All pre-entries for RIHS must be sent to BSPA for checking 14 days before show.

2. COMPETITORS

1. **Qualification cards** - These must be signed in the ring by the judge for Qualification to be valid.

SECTION C

QUALIFICATION REQUIREMENTS for the BSPA World Championships of Colour National Champion of Champions (continued)

2. **Working Hunters** - qualification can be accepted from competitors who have qualified for other affiliated competitions. Under these circumstances a photocopy of the qualification card **MUST** be sent to the BSPA for validation, e.g. PUK, BSPS, SHB UK.
3. **In Hand** - Horses and ponies 4 years and over may be shown in a double bridle. **BOTH** bits must be presented and both reins must be used. Judges are asked to be especially vigilant regarding this requirement.

4. **Jewellery** - In accordance with Health and Safety considerations no competitor may enter the ring with any ear rings or facial jewellery including tongue studs.

5. **Qualifying status** - qualification is only valid if the BSPA Qualification card has been correctly filled in and signed by the judge. Competitors **MUST** ensure each horse/pony has a separate/individual card (apply show office).

6. **Registration & Membership** - All horses must be registered with the BSPA. In order to qualify at any Qualifying Show and Owners (including Joint loan or lease arrangements), Handlers and Riders must be members of BSPA. Membership Cards and qualifying cards **MUST** be carried into the ring by the Rider/handler for the judge/steward to sign in the ring.

7. **In order to Qualify** - **ALL** horses/ponies **MUST** be registered with the BSPA prior to the qualifying show and **ALL** handlers/riders members prior to the show. At some shows competitors need not be members or horses registered with BSPA in order to enter **BUT** qualification is not valid under these circumstances. Classes with the exception of RIHS are open to Members and Non Members.

8. **Height Certificates** are required for RIHS only.
Shetland Ponies do not require height certificates

9. **Shoeing** - Horses/Ponies may be unshod at the owner's discretion. Only normal shaped shoes that do not cover the frog are permissible. No Bar Shoes are allowed.

**THE BSPA SHOW COMMITTEE RESERVES THE
RIGHT TO REFUSE AN ENTRY FROM ANY
COMPETITOR REGARDLESS OF QUALIFYING
STATUS AND ARE NOT OBLIGATED TO OFFER
ANY EXPLANATION**

SECTION D

THE ROYAL INTERNATIONAL HORSE SHOW

1. **All rider and owner Exhibitors, Leasors, Loaners, must be current paid up members and horses/ponies registered or overstamped with BSPA in order to qualify and attend RIHS Final. No exceptions.**
2. **Membership Cards** must be carried into the ring at all times. Some shows may ask to see membership cards before allowing competitors to enter the ring. Cards may be inspected on request. Membership Cards must be carried by the person to whom they have been issued and who is the person named on that card.
3. **RIHS Qualification** is achieved at BSPA Affiliated designated shows only.
RIHS cards - members qualifying for the 2011 RIHS during the 2010 season, must purchase a 2011 RIHS card in order to compete by the 31st January 2011. All other members wishing to compete RIHS in 2011 apply in the normal way.
- 3b. **Horses and Ponies** who qualify for RIHS for the forthcoming year may not change the category they have qualified in, e.g. if you qualify as a cob/native/trad you cannot transfer to a plaited category. Exhibitors wishing to change category will have to achieve qualification in the new category. Once a category has been changed it cannot be reversed.
4. **RIHS Qualification** - First place in each section and the next unqualified competitor standing second or third qualifies. No qualification may come out of lower than third place.
5. **Horses/Ponies** may qualify once per season, but may qualify for 09 RIHS after 08 closing date.
6. **RIHS Qualifiers held after 6th June will qualify for RIHS 2015** - Members must renew their membership before 31st January 2015 for 2015 qualification to remain valid.
7. **Lead reins** not permitted.
- 7a. **Minimum age** for riders in RIHS Pony Classes is 8 years calculated from 1st January.
8. **Ponies 153cm** and under must be in possession of a current JMB Height Certificate. Shetland Ponies are exempt. Please see page 12 for JMB details and contact numbers.
9. **Ponies 153cm and under** must be suitable for the age/height/weight of the rider.
10. **Spurs** may not be worn by any competitor in any pony 153cm and under class. Spurs may be worn in championships by riders who have qualified from a 153cm and over horse class.
11. **Horse riders** must be 15 years or older on 1st January of current year.
Pony riders minimum age 8 years on 1st January of current year.
12. **All stallions** must be graded/licenced/registered with BSPA. Stallions must be ridden by riders 14years and over on 1st January of current year.
13. **Entries on the day** - Certain shows may accept entries on the day. Competitors should contact the show to confirm availability and present membership card and Qualification card as proof of eligibility. Entry Fees cash only.
Substitution of entries is not permitted
- 13b. **Entries: Do not enter the breeding of your horse or pony unless it holds a verified parentage breeding passport from a recognised Breed Society.**

British Skewbald and Piebald Association 2014



“Everything for the Coloured Horse Enthusiast”

SHOWING GUIDELINES 2014

**BSPA, Stanley House, Silt Drove, Tipps End,
Welney, Cambs PE14 9SL
Tel: 01354 638226 Fax 01354 638238
email: bspashows@aol.com
Website www.bsponline.com**

GRID A – SHOWING GUIDELINES -RE RIDDEN DISPLAY AND COMPETITOR TURNOUT

Type or Breed	Optional Coloured Browband	Plaited	Show Judge Rides May be optional	Galloped	Jumped	Tack	Jacket	Spurs See	Stripped Rules	Notes	Gloves (not white)	Canes & Sticks Not to exceed
30"												
Warmblood & Competition Horses	x	✓	✓	✓	✓ Workers ✓ R.C.H ✓ Style & Performance	Double Pelham or Snaffle	Hacking or Navy	✓	✓	Riding Club Horse = Snaffle Bridle only	✓	or 76cms. ✓ ✓
Large British (Cold Blood) and Draught	x	Optional	✓	Optional	✓ Workers ✓ R.C.H ✓ Style & Performance	Double Pelham or Snaffle	Hacking	✓	✓	As above RCH	✓	✓
Natives	x	x	✓	✓	✓ as above	D.P. or S	Hacking	✓	✓	As above RCH	✓	✓
Cob Type	x	Optional unless hogged	✓	✓	✓ as above	D.P. or S	Hacking	✓	✓	If hogged, tail must be pulled. Leggs trimmed. RCH = Snaffle	✓	✓
Show Cob	x	Hogged only x	✓	✓	✓ as above	D.P. or S	Hacking	✓	✓	RCH as above	✓	✓
Thoroughbred	✓	✓	✓	✓	✓ as above	D.P. or S	Hacking or Navy	✓	✓	RCH as above	✓	✓
Hunter	x	✓	✓	✓	✓ as above	D.P. or S	Hacking or Navy	✓	✓	RCH as above	✓	✓
Vanner	x	Optional	✓	✓	✓ as above	D.P. or S	Hacking or Navy	✓	✓	RCH as above	✓	✓
Lightweights	Optional	✓	✓	✓	✓	D.P. or S	✓	✓	✓	RCH as above	✓	✓
Novice	See type	See type	x	Extend	As appropriate	S	See type entries	x	✓	Snaffle Bridle recommended	✓	✓
Riding Pony	✓	✓	✓	✓	x	D.P.S.	Navy or black or Cutaway	x	✓	RCP – Snaffle only	✓	✓
American Saddle Stallions	See American Saddle See type	✓	✓	✓	✓	D.P.S.	Hacking or Navy	✓	✓	RCH as above	✓	✓
Side Saddle	✓	✓	x	x	x	Refer S.S. Assoc.	Bowler & Habit	✓	✓		✓	✓
Equitation	✓	✓	x	x	x	S	Hacking or Navy	x	x		✓	✓

Key to Symbols

- D = Double Bridle
- P = Pelham
- S = Snaffle
- N/A = Not Applicable
- X = No
- Y = Yes

HEADGEAR:

- In working hunter skull caps must be worn with navy or black covers.
- All children under 18 years must wear BHS approved headgear with chin strap.
- The BSPA advises all competitors to wear BHS approved hats with a chinstrap.
- All persons mounted, whether competing or not, MUST wear correctly fitting hard hats.
- Top Hats not permitted unless 18 years
- WHIPS: In all categories except sidesaddle whips must not exceed 30" or 76cms.

- Stocks – Not recommended
- Nummahs – Must be white, black or brown.
- Girths – Must be white, black or brown.
- NO SADDLE CLOTHS PERMITTED**
- (Persons wishing to exhibit sidesaddle in an open class must ask permission of Judge and provide an a stride saddle if judge rides).

GRID B – SHOWING GUIDELINES – IN HAND 4 years and Over

Type & Breed	Soc. Reg. Papers BSPA	Verifiable Percentage	Clipped Hugged or Pulled Tail	Braided or Plaited Mane/Tail	1H Bridle (Snaffle Bit) or Double	White Show Halter	Bitted	Coloured Brow Band	Side Reins and Roller	NOTES
Warmblood/Performance Horse	✓ Nat. Champs. only.	✓ (Essential)	Pulled Tail	Plaited Mane	S	x	✓	x	x	Refer to appropriate Society Rules.
Large British Types (Cold Bloods)	✓ Nat. Champs. only.	Recommended	x other than Vanners	Optional	S or D	x	✓	x	x	Vanners may be shown as Cobs.
Native Types	✓ Nat. Champs. only.	Recommended	x	x - refer notes	S or D	x	✓	x	x	
Cob Type (Exceeding 15.1hh)	✓ Nat. Champs. only.	Recommended	Optional	Optional P or B	S or D	x	✓	x	x	Where hoggied must have a pulled tail.
Show Cob	✓ Nat. Champs. only.	Recommended	✓ hoggied/pulled tail and trimmed	x	S or D	x	✓	x	x	Hoggied pulled etc.
Thoroughbred	✓ Nat. Champs. only.	Recommended	✓ Plaited	✓ Pulled or plaited	S or D	x	✓	Optional	x	
Hunters	✓ Nat. Champs. only.	Recommended	x	Plaited and pulled	S or D	x	✓	x	x	
Lightweights (e.g. Hack, Arab)	✓ Nat. Champs. only.	Recommended	x	✓ Plaited	S or D	x	✓	Optional	x	
Draught Types	✓ Nat. Champs. only.	Recommended	x	✓ (See notes)	S only	✓	✓	x	x	Running rig and tail buns acceptable
Vanners	✓ Nat. Champs. only.	Recommended	Optional as Cob refer notes	Optional as Draught	S	x	✓	x	x	May be presented as Cobs.
Pony	✓ Nat. Champs. only.	Recommended	x	Plaited Refer notes	S	x	✓	✓	x	
American	Refer to American Saddle Bred Society Rules									

Notes:

Whip/Cane: Not to exceed 30" (76cms)

Grooms:
It is the responsibility of exhibitors to ensure that grooms entering the showing for inhand or ridden classes are correctly and smartly turned out.

Age:
Denotes year of birth not month of birth.
Age is from 1st January.

Manners:

A judge may ask for a horse to leave the ring if in his/her opinion the horse is ill-mannered.

Unsoundness:

If in the opinion of the Judge, a horse is unsound, the exhibitor shall be given the option of withdrawing the horse from the class or asking for a veterinary to examine the horse. If no veterinary surgeon is available the JUDGE'S DECISION IS FINAL.

Competitor Turnout:

Refer to Grid C.

GRID C – SHOWING GUIDELINES – IN HAND YOUNGSTOCK AND BREEDING STOCK

Breeding Stock	Society Req. Papers – BSPA	Verifiable Parentage (Blue Papers)	Bridle	Halter/Head Collar	Bitting	Coloured Brow Band	Plaited	Trimmed & Hogged	Roller & Side Reins	NOTES
Yearlings	Nat. Champs. only.	Recommended	Optional Straight Bar Vulcanised Recommended	Optional	Optional	As appropriate to type.	✓	Not Recommended	x	Age as from 1st January Following year of birth.
2/3 year Old	Nat. Champs. only.	Recommended	Yes	x	✓ Snaffle Only	Appropriate to type.	✓	Optional to type.	x	
Foals	Nat. Champs. only.	Recommended	No	✓ Controller Headcollar permitted	Under NO circumstances.	Appropriate to type.	x	x	x	Foals may be exhibited over 4 weeks of age and with their Dam.
Brood Mares & Barren Mares 4 years and over	Nat. Champs. only.	Recommended	✓ Double Bridle permitted.	x	✓	Appropriate to type.	✓	✓	x	
Stallions/Colts (above)	Nat. Champs.	Recommended	Yes	Not permitted – under BSPA rules. Exhibitor will be asked to leave ring.	Must be Bitted.	Appropriate to type.	✓	✓	x	Whips may not exceed 30" (76cms). Hard hats needed.

<p>Notes:</p> <p>All stallions exhibited at BSPA National Championships and all Affiliated Shows MUST be Graded by the BSPA.</p>	<p>COLTS</p> <p>Colts must be Graded at 3 years old and over by BSPA if they wish to show.</p> <p>COMPETITOR TURNOUT:</p> <ol style="list-style-type: none"> 1. Men should wear a suit or jacket and trousers, collar and tie and either a Bowler Hat or Tribby. 2. Women may wear a coat and trousers with a collar and tie, or must otherwise be tidily and neatly dressed. (With appropriate footwear). 	<p>AGE:</p> <p>Denotes year of birth NOT date of birth. e.g. Born 2007 yearling January 2008.</p>
---	--	--

SECTION D

THE ROYAL INTERNATIONAL HORSE SHOW

- 13c. Enter your horse or pony in the name that appears on the Passport (always recorded the passport and your BSPA number.
- 13d. When you have qualified for RIHS send the signed card to the BSPA Office immediately. Send by recorded delivery.
14. **Weight/Height/Type classification changes** - No animal may change their classification details during a current show season. No horse/pony may change category e.g. Native or Traditional to any plaited category. Q cards will indicate selected category – see Rule B48.
15. **Qualifying Status** will be accepted when all of the conditions relating to grading of stallions, registration of horses/ponies height certificates and memberships have been met. See Rule 30A
16. **Leasing forms** are available from show office.
17. **Company membership** must be in place for horses/ponies to be entered in company name. Fee £100 includes 1 membership or business name.
18. **Change of catalogued rider** - See page 15, Rule 32A
19. **Grooms** (see rule 69, page 22) turnout which must be adhered to or you will be asked to leave the ring. **Grooms may not enter the ring until the last competitor has been placed in the first line up**, they must approach from behind the line up in a discreet manner – DO NOT WALK IN FRONT OF THE EXHIBITS. Grooms will leave the ring in a discreet manner. Equipment should be kept to a minimum.
20. **Championship at RIHS** - top hats tails may be worn by senior riders only. Juniors 18 years and over may wear navy jackets but must wear approved hats with chin harness.
21. **No exhibitor/rider/groom** may wear in the ring any garment that says their name, sponsor or indication of what they have won. Nor may any horse/pony wear a rug with its name on it.
22. **No Horse/Pony** may have its colour or markings enhanced by make-up. Glistening oil, etc, is permitted in reasonable amounts. No traditional pony may have false mane, forlock, tail extensions.

OBJECTIONS – APPLIES TO ALL BSPA SHOWS

1. Must be made by fully paid-up Senior Members of BSPA.
2. Must be made by competitors/owners of the animal in the class **not spectators**.
3. May **ONLY** be made in respect of height, age, type, rule infringement.
4. **a)** Must be lodged within 24 hours with BSPA Show Office, sent special delivery. Membership numbers must be quoted and accompanied by a fee of £100, which will be refunded if objection is upheld.
b) Any objection must be lodged in the first instance with the Show Secretary of the Show the complaint occurred. A deposit should be lodged with that Show Secretary and a receipt obtained.
5. Any complaint must be lodged in a respectful manner.

REPORTING ALLEGED ACTS OF CRUELTY OR ABUSE OF ANY ANIMAL AT BSPA ADMINISTERED SHOWS

1. Inform the Show Secretary within 1 hour of the alleged incident in writing with the competitor number/name of the alleged person, location, time and the name or description of the animal concerned.
2. The person reporting the incident must list their name, address and contact telephone number legibly and sign the allegation. Group allegations are not permitted, each person making the allegation must write their own description of the incident.
3. The individual(s) making the allegation must be prepared for full disclosure of the allegation to the party concerned in the allegation and must be prepared to appear at a hearing if it is deemed necessary.
4. BSPA does not have jurisdiction at shows not administered by them. Please report any incident to the Show Secretary, it will be up to that show to deal with the incident in the first instance as and how they deem suitable.

Any member of the Association or any person whatsoever attending a BSPA Show (who is reported in the correct manner) of any alleged act of cruelty or alleged inhumane treatment of any equine will have that allegation investigated and may be referred to the Disciplinary Panel. The BSPA reserves the right to nominate an outside impartial third party should they so wish to investigate allegations.

DISCIPLINARY PROCEDURE

1. The Disciplinary Procedure shall be called up at any time when an action has been taken to cause a Member of the Association to view such action as being not in the best interests of the Society.
 - 1.1 When an action which falls within the definition has been reported a meeting of either the Committee or a Disciplinary Sub-Committee shall be called to discuss the incident.
 - 1.2 The Committee/Disciplinary Sub-Committee shall cause an enquiry to be made of the member and may involve third party investigations where appropriate. During this period, the member may be suspended from the participation and privileges of the Association at the discretion of the Committee/Disciplinary Sub-Committee. Requested responses to enquiries and investigations shall be given realistic time-scales of not less than seven days and not more than 28 days at the discretion of the Committee/Disciplinary Sub-Committee.
 - 1.3 Enquiries and investigations shall be circulated to members of the Committee/disciplinary Sub-Committee and a further meeting called to decide further action to be taken with regard to the member.

DISCIPLINARY PROCEDURE – (continued)

- 1.4 Should the Committee/Disciplinary Sub-Committee decide that action should be taken, one or more of the following penalties for each breach found may be placed upon the members:

Informal stage:

- 1.4a Written admonishment. **No appeal**
1.4b Written censure (being a final warning). **No appeal**
1.4c Monetary fine. **No appeal**

Formal Stage:

- 1.4d Suspension (in part or in whole) from:–

- Showing or participation of the member or the member's horses in any Association recognised event, show or function
- Receiving or retaining an accolade/prize **Appeal procedure applies**

- 1.4e Expulsion from the Association. **Appeal procedure applies**

- 1.5 The member shall be notified in writing of the Council/Disciplinary Sub-Committee's findings and decision and any notice given shall be deemed to be given on the date such notice was posted by first class recorded delivery post to the last known address of the member.
- 1.6 The member on receipt of any notice (refer 1.5) will have 28 days from the date of the letter, in which to submit a written appeal against the findings, decision or sanctions applied by the "Disciplinary Sub-Committee" after which an "Appeals Board" will be convened. No Solicitors letters may be entered into any appeal.
the appeal should set out the reasons for objection and highlight any area of dispute regarding the facts of the matter.
- 1.7 The BSPA Appeals Board will normally consist of three Council Members, 2 of who will be Trustees and chaired by either the Chairman of Company Secretary. The BSPA reserve the right to bring in an external person whose expertise is considered relevant but who will not be eligible to decide on the Appeal outcomes.
- 1.8 BSPA members subject to Disciplinary procedures will have the right to address the appeal board in person and be accompanied by a support person (not a legal representative) who is not eligible to address board members, at stage 1.7 only

LOOK AT OUR WEBSITE
www.bspaonline.com
FOR ALL SHOW DATES AND
INFORMATION UPDATES
WE ARE ON FACEBOOK & TWITTER

The Brightwell Auctioneers Skewbald and Piebald Sports Horse and Pony In-Hand National Championship

In Hand horse/pony likely to excel in the competition disciplines of Dressage, Eventing or Show Jumping. These classes are for athletic sport horses and ponies who have the conformation and movement to excel in their chosen sphere and who hold a Verified Breeding/Proven Pedigree Passport. All owners and handlers **MUST** be BSPA members + horses and ponies registered with BSPA in order to compete and Qualify. Prize Cards will be given to entries that qualify.

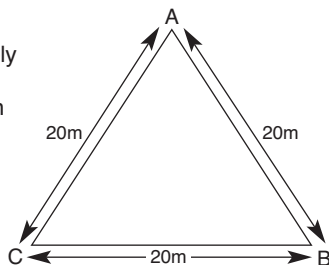
METHOD OF JUDGING:

PHASE 1: All exhibits/finalists will enter the ring to be comparatively judged by the Judge(s) as a class, for temperament and manners.

PHASE 2: All exhibits will leave the ring and re enter individually in number order for individual judging and mark allocation.

(In the final exhibits will be required to walk and trot the triangle as indicated in 2&3, see diagram.)

PHASE 3: All exhibits/finalists will enter the ring together for final judging and presentation.



JUDGING:

1. **CONFORMATION**, Judges will either stand at A or in a designation ring area and award conformation marks out of 5.
2. **WALK**, Exhibits will either walk the triangle A-B, B-C, C-A, OR as directed by the Judge (s). Marks out of 5.
3. **TROT**, Exhibits will either Trot the triangle A-B, B-C, C-A, OR as directed by the Judge (s). Marks out of 5.
4. **OVERALL IMPRESSION**, Marks out of 5 (as exhibit leaves the ring)
5. **PRESENCE AND PACES**, Athleticism fluidity of paces and presence will be judged throughout phases 1-3 marks out of 5.

SCORING:

- Judge (s) will give marks out of 5 for each section 1-5.
- Placing will be determined by the exhibit (s) points. The winner will be the exhibit with the highest score out of 25 marks.
- In the event of a tied score; 'count back' to the marks awarded in 5. **Presence & Paces** will determine the winner.
- In the event of a 2nd tied score ; 'count back' to the marks awarded in 4. **Overall Impression** will determine the winner.
- Tied Scores thereafter will result in joint placing being awarded.

CLASSES

- Youngstock 3yrs and under (as 01/01/2008) any sex.
- Horses & Ponies aged 4-8yrs (as 01/01/2008) any sex. All Stallions **MUST** be Graded with BSPA in order to enter.

FINAL:

Will be held at the BSPA World Championships of Colour

QUALIFICATION FOR FINAL:

The 1- 3 placed exhibits will qualify, and at BSPA own shows the 3 highest placed exhibits not previously qualified , not effected by numbers forward.

NATIONAL CHAMPIONSHIP FINAL:

1st & 2nd from each class compete for the Brightwells Championship at the World Championships of Colour.

PANEL OF BSPA JUDGES 2014

LIST 1 RIHS RIDE + DISPLAY + CONFIRMATION COUNTY/CHAMPIONSHIP SHOWS +
Skewbald and Piebald Breeding classes and Ridden Skewbald and Piebald Conformation.

LIST 2 RIHS CONFORMATION + PONY DISPLAY COUNTY/CHAMPIONSHIP SHOWS Skewbald and Piebald Breeding classes & Ridden Skewbald and Piebald conformation (horses and ponies).

LIST 3 WORLD CHAMPIONSHIPS OF COLOUR QUALIFIER SHOWS In-Hand/Ridden Skewbald and Piebald Horse & Pony classes including Working Hunter Pony. Judges will not ride (ponies only)

LIST 4 NON-QUALIFIERS Riding Club/Pony Club ridden & In-Hand classes (horses and ponies).

JUDGES WISHING TO UPGRADE MUST APPLY IN WRITING TO THE BSPA OFFICE IN THE FIRST INSTANCE

	LIST 1 RIHS ride + Display + Conformation	LIST 2 RIHS Conformation + Pony Display	LIST 3 World Championships of Colours	LIST 4 Non-qualifiers Riding Club Pony Club	Other Information
BEDFORDSHIRE					
Lewis, Miss Joan , 41 Southcourt Ave, Linslade, Leighton Buzzard, LU7 7QD 01525 373382	x	✓	✓	✓	
McDonald-Bassett, Mrs D 7 Poplar Close, Leighton Buzzard, Beds LU7 3BS 01525 373510	✓	✓	✓	✓	
Surman, Mr Martin 49 Clifton Road, dunstable, Beds LU6 1LU 07956 020679	PROBATIONER				
BERKSHIRE					
Devene, Ms Aimee Follywood, Beedon Common, Newbury, Berkshire RG20 8TU	x	x	✓	✓	Ride
Ramsay, Mr Richard Little Holdrops, Common Road, Headley, Thatcham, Berks RG19 8LS 01635 268208 07831 541994 ramsay.richard5@gmail.com	x	✓	✓	✓	
Ramsay, Mrs Marjorie Little Holdrops, Common Road, Headley, Thatcham, Berks RG19 8LS 01635 268208 / 07788 516049	x	✓	✓	✓	
BUCKINGHAMSHIRE					
Hart, Mrs Josephine Mary 4 Church Lane, Wicken, Milton Keynes MK19 6BU 01908 571278 / 07966 001475 josehart33@aol.com	✓	✓	✓	✓	Side-Saddle
Jenkins, Mrs J Hornets Farm, Padbury Road, Thornborough MK18 2EB 01280 817294 / 07831 838667	x	✓	✓	✓	
Spears, Mrs Debbie Fairview, 1 Great Brickhill Lane, Little Brickhill, Bucks 07798 900835	x	✓	✓	✓	
Tanner, Mrs Samantha 42 Middlebrook Road, High Wycombe, Bucks HP13 5NJ M: 07768 170982 samtanner42@hotmail.com	✓	✓	✓	✓	
Whitehall, Miss L East Farm, Ashendon, Nr Westcott, Aylesbury HP18 0HB 01296 6512491 / 07762 423999	✓	✓	✓	✓	

	LIST 1 RIHS ride + Display + Conformation	LIST 2 RIHS Conformation + Pony Display	LIST 3 World Championships of Colours	LIST 4 Non-qualifiers Riding Club Pony Club	Other Information
CAMBRIDGESHIRE					
Williams, Mrs J Pendley Stud, Glebe Farm, Verney Road, Winslow, Bucks MK18 3BN 01296 714830 / 07746 037603	x	✓	✓	✓	
Gillette, Miss Christina 7 Townsend, Little Downham, Ely, Cambs CB6 2TA 01353 699232 / 07811 182583	✓	✓	✓	✓	
Gillett, Mrs M 4 Townsend, Little Downham, Ely, Cambs 01353 699232	x	✓	✓	✓	
Grummitt, Miss Angela 15 The Shade, Soham, Ely, Cambs CB7 5DE 01353 723160	x	✓	✓	✓	Grading Panel
Grummitt, Miss Jillian 15 The Shade, Soham, Ely, Cambs CB7 5DE 01353 723160 jillian.grummitt@btinternet.com	x	✓	✓	✓	Grading Panel
Holder-Vale, Mrs K Witcham Farm House, Witcham, Ely, Cambs 01353 777078	x	✓	✓	✓	Dressage
Lodge, Ms Lynda Stanley House, Silt Drove, Tipps End, Welney, PE14 9SL 01353 638226	x	✓	✓	✓	
Wright, Ms Liz Hook House, Hook Road, Wimblington, March, Cambs PE15 0QL 01354 741538 / 07770 683766	x	✓	✓	✓	
CHESHIRE					
Daley, Mr M Calveley Green Farm, Tarporley, Cheshire CW6 9LF 01270 528256	x	✓	✓	✓	
Evans, Mr Ron 161 Underwood Lane, Crewe, Cheshire CW1 3SB 01270 256315	x	x	✓	✓	
COUNTY DURHAM					
Wilson, Mrs K Rose Cottage, Boldron Barnard Castle, Co Durham DL12 9RG T: 01833 631204 M: 07870 333538	x	✓	✓	✓	Grading Panel Evaluation
CORNWALL					
Wood, James D Trevean, Pencuke St Gennys, Bude, Cornwall EX23 0BH T: 01840 230663 M: 07432 635550	x	✓	✓	✓	

	LIST 1 RIHS ride + Display + Conformation	LIST 2 RIHS Conformation + Pony Display	LIST 3 World Championships of Colours	LIST 4 Non-qualifiers Riding Club Pony Club	Other Information
CUMBRIA					
Abba, Mrs Rebecca Todds Farm, Lambrigg, Kendal, Cumbria LA8 0DJ 01539 824222 / 07886 435002	✓	✓	✓	✓	
Brooks, Mrs Tracey Cocklea Bendrigg, Old Hutton, Nr Kendal, Cumbria LA8 0NR 01524 781582	✓	✓	✓	✓	
DERBYSHIRE					
Southern, Mrs Tracy Knowts Hall Cottage, Golden Valley, Nr Riddings, Derbyshire DE55 4ES 07960 915420 traceysiuthern65@hotmail.co.uk	✓	✓	✓	✓	
Taylor, Mr Daniel 3 West Hill, Codnor, Ripley, Derbyshire DE5 9RX 07515 960140	x	x	✓	✓	
Warman, Ms M D The Hunt Kennels, Lea Mead Farm, Charlsworth Glossop, Derbyshire SK13 5DP 07743 116141	x	x	✓	✓	
DEVON					
Edwards-Bradley, Mrs Emma Brickyard Farm, Hatherleigh, Devon EX20 3LE 01837 810204 / 07778 937728	✓	✓	✓	✓	
Hodge, Mr David Lower Halstock Farm, Okehampton, Devon EX20 1QR 01837 55402 halstockshetlands@gmail.com	x	✓	✓	✓	
Hore, Mrs Stella Kimberley, Northlew, Okehampton, Devon EX20 3NG 01409 221444 / 07771 895768 stalle@hore.co.u.k	x	✓	✓	✓	Grading Panel Evaluation
Jordan, Mrs D M Moortown, Gidleigh, Chagford, Newton Abbot, Devon TQ13 8HU 01647 433220 diane@moortownfarm.co.uk	x	✓	✓	✓	Grading Panel
Locke, Mrs E D Okeleat Stud, Niasas, Jacobstowe, Okehampton, Devon EX20 3RJ 01837 851308 / 07980 046880	x	✓	✓	✓	
Newberry, Miss J Oaklands Stables, Alphington, Exeter EX2 9JA 01392 272105	x	✓	✓	✓	

	LIST 1 RIHS ride + Display + Conformation	LIST 2 RIHS Conformation + Pony Display	LIST 3 World Championships of Colours	LIST 4 Non-qualifiers Riding Club Pony Club	Other Information
DEVON (continued)					
Sizmur, Mrs Anne Oatnell, Thorndon Cross, Okehampton, Devon EX20 4NQ 01837 861278	x	✓	✓	✓	
Walters, Mr Julian Lower Halstock Farm, Okehampton, Devon EX20 1QR 01837 55402 sharpstorstud@gmail.com	x	✓	✓	✓	
DORSET					
Mathews, Mrs Vicky Hillview Farm, Yetminster, Sherborne, Dorset DT9 6NN 01935 872379 / 07971 720432 vickyjmathews@btconnect.com	x	✓	✓	✓	Grading Panel
ESSEX					
Armstrong-Small, Miss Justine Lower Lodge House, Off Long Street, Uphire, EN9 3TH 01992 763451 / 07831 241827 justine.armstrongsmall@btopenworld.com	✓	✓	✓	✓	Working Hunters
Fuller, Mr Nigel Burrells Farm, Church Road, Rawreth, Essex SS11 8SH 01268 762001 / 07774 729233	x	✓	✓	✓	
Fuller, Mr Mark Burrells Farm, Church Road, Rawreth, Essex SS11 8SH 01268 572394 / 07790 242634	x	✓	✓	✓	
Hutley, Miss Michelle 185 Shaftsbury Avenue, Thorpe Bay, Essex SS1 3AL 01702 587873 / 07881 858436 michellehutley@btinternet.com	✓	✓	✓	✓	
Jerram, Mrs Katie Collins Farm, Aythorpe Roding, Gt Dunmow, Essex CM6 1PF 01245 231215 / 07860 272155	✓	✓	✓	✓	
Overton-Ablitt, Mrs A The Colne Stud, Hill Farm, Dedham, Colchester, Essex CO7 6BH 01206 323495 / 07778 346546 colnestud@googlemail.com	x	✓	✓	✓	
Parrott, Miss Sara 113 Broomstick Hall Road, Waltham Abbey, Essex EN9 1LP 07873 416543 saraparrot1983@yahoo.co.uk	✓	✓	✓	✓	
Peopall, Mr Colin 3 Orchard Place, South Woodham Ferrers, Chelmsford, Essex CM3 5LQ 07812 030416 colin.peopall@gmail.com	x	✓	✓	✓	Grading Panel Evaluation Judges Assessment

	LIST 1 RIHS ride + Display + Conformation	LIST 2 RIHS Conformation + Pony Display	LIST 3 World Championships of Colours	LIST 4 Non-qualifiers Riding Club Pony Club	Other Information
GLOUCESTERSHIRE					
Hamilton, Mrs Laura 2 Sunny Cottages, Naunton, Cheltenham, Glos GL54 3AD 01451 850103 / 07766 956256 robert@centralsurveying.co.uk	✓	✓	✓	✓	✓
King, Mrs Rosemary Berrimans, Lyppiatt, Nr Bisley GL6 7LP 01452 770404 / 07885 104279 rosemary-king@hotmail.co.uk	✓	✓	✓	✓	
Mastin, Mr John Broadgate, 4 Hiatt Road, Minchinhampton, Stroud, Glos GL6 9DB 01453 883008 / 07791 447232	x	✓	✓	✓	Grading Panel Evaluation
Mastin, Mrs Wendy (nee Bartlett) Broadgate, 4 Hiatt Road, Minchinhampton, Stroud, Glos GL6 9DB 01453 883008 / 07812 797269	✓	✓	✓	✓	Grading Panel Evaluation
HAMPSHIRE					
Andrews, Mrs G Standen House, Chute, Standen, Andover, Hants SP11 9EE 01264 730252 / 07798 927080	x	✓	✓	✓	
Conifey, Mr John 5 Eldene Court, Ashurst Bridge, Southampton, Hampshire 01367 718673 / 07979 060256 johnconifey@yahoo.co.uk	✓	✓	✓	✓	Grading Panel Dressage Evaluation
Fisher, Miss S Trottsford Farm Cottage, Picketts Hill, Sleaford, Hampshire GU35 8TF 07774 478760	✓	✓	✓	✓	
Maynard, Mr John Sheldon Flat 2, 1 Longmead, Liss, Hants GU33 7JX 01730 890427 / 07864 811614	x	✓	✓	✓	
Owen, Miss Jane 3 Manor Farm Cottages, Upton Grey, Basingstoke, Hants RG25 2RQ 07817 012192	✓	✓	✓	✓	
Wright, Ms Gillian Randalls Farm, Burley Street, Ringwood, Hants BH24 4HJ 01425 404024 / 07710 358555	x	✓	✓	✓	
Wright, Ms Liz Moortown Stud, Crow Lane, Ringwood, Hants BH24 3EA 01425 478697	x	x	✓	✓	
HEREFORDSHIRE					
Bigley, Mr L The Quakers Farm, Michaelchurch, Escley, Herefordshire HR2 0PT 01981 510667	x	✓	✓	✓	Grading Panel
Bigley, Mrs M A The Quakers Farm, Michaelchurch, Escley, Herefordshire HR2 0PT 01981 510667	x	✓	✓	✓	
Morgan, Mr Dennis The Lowlands, Eardisley, Herefordshire HR3 6NS 01544 327718	x	✓	✓	✓	

	LIST 1 RIHS ride + Display + Conformation	LIST 2 RIHS Conformation + Pony Display	LIST 3 World Championships of Colours	LIST 4 Non-qualifiers Riding Club Pony Club	Other Information
HERTFORDSHIRE					
Dew, Mrs Clare 22 Lattimore Road, Wheathampstead, Herts AL4 8QE T: 01582 834048 M: 07970 028404	x	✓	✓	✓	
Harvey, John Cheshunt Park Farm, Park Lane, Paradise, Cheshunt, Herts EN7 6PZ 07944 480857	x	✓	✓	✓	
Saunders, Ms Jenna 1 Newgate, Stevenage, Herts SG2 9DS 0777 333391	x	✓	✓	x	
Smythe, Mrs Adrienne Todds End, Todds Green, nr Stevenage, Herts SG1 2JE 01438 353041 / 07857 804997	x	✓	✓	✓	
KENT					
Judges, Mrs Samantha 4 Poynings Close, Orpington, Kent BR6 9BP 07793 820395	✓	✓	✓	✓	
LANCASHIRE					
Avery, Mr R Drumacre Hall Stud, Drumacre Lane, West Longton, Preston, Lancs PR4 4SB 01772 614572 / 07855 782909	x	✓	✓	✓	
Bennett, Mr D 73 Lancaster Road, Blackpool, Lancs FY3 9SR 07583 674769	✓	✓	✓	✓	
Beresford, Mrs B Moss Cottage, 12 Droughts Lane, Simister, Prestwich, Manchester M25 2ST 0161 773 5787 / 07766 884150	x	✓	✓	✓	
Birtwell, Mrs Lindsey Brownhouse Farm, Barley Lane, Barley Nelson, Lancs BB9 6LG 07966 230353	x	✓	✓	✓	
Castellano, Mrs Dee 6 Argyll Street, Newtown, Wigan, Lancs WN5 9BG 01942 776744 / 07562 804069	x	✓	✓	✓	
Dickinson, Mr I 13 Rosehill Drive, Bolton, Lancashire BL7 9JN T: 01204 300160 / 07538 408872	x	✓	✓	✓	
Froggatt, Mr David Lower Spring Bank Farm, Back Lane, Baxenden, Lancs BB5 2SF 07843 101949 / 07713 255560	✓	✓	✓	✓	
Green, Mrs Emma Higher View Farm, Moorgate Road, Barnoldswick, Lancs BB18 5SG 01282 853150 / 07813 830546	✓	✓	✓	✓	

	LIST 1 RIHS ride + Display + Conformation	LIST 2 RIHS Conformation + Pony Display	LIST 3 World Championships of Colours	LIST 4 Non-qualifiers Riding Club Pony Club	Other Information
LANCASHIRE (continued)					
Hester, Mr Benjamin Lower Spring Bank Farm, Back Lane, Bexenden, Lancs BB5 2SF 01282 853150 / 07813 830546	✓	✓	✓	✓	
Hodgett, Mrs V Lower Small Hazels, Habergam Eves, Burnley, Lancs BB11 3RR 01282 439684 / 07915 172659	x	✓	✓	✓	
Hodgkinson, Mr Peter Crowwood House, Royle Lane, Burnley, Lancs BB12 0RT 01282 427073 / 07930 691781	✓	✓	✓	✓	
Hollings, Mr Nigel Blue Slate Stables, Clayton-le-Dale, Blackburn, Lancs BB1 9DP 01254 812805 / 07808 583929 fax 01254 814804	x	✓	✓	✓	
Hoyle, Mrs Janet Stormer Hill, Closes Farm, Tottington, Bury, Lancs BL8 3PE T: 01204 888447 M: 07881 943873	x	✓	✓	✓	Side-Saddle Dressage
Jones, Mrs Emma 97 Southwold Drive, Baxenden, Lancs BB3 2TU 07743 116141	✓	✓	✓	✓	
Lee, Mr Kevin 3 Barnsfoold, Fulwood, Preston, Lancs PR2 3EU 07515 033980	✓	✓	✓	✓	
Logan, Mrs Karen 5 New Wellington Gardens, Mill Hill, Blackburn, Lancs BB2 4HE 01254 694517 / 07732 638764	x	✓	✓	✓	
Nuttall, Miss Julie Elizabeth 59 Mallard Drive, Horwich, Bolton, Lancs BL6 5RN 01204 696585	x	x	✓	✓	
Ogden-Bailey, Mrs M 23 Central Drive, Urmston, Manchester M41 9AQ 0161 749 8199 / 07977 787996	x	✓	✓	✓	
Park, Mr Daniel 35 Avenue Road, Normoss, Blackpool, Lancs FY3 7SG 01253 301119 / 07790 227298	x	✓	✓	✓	
Patrick, Mr C Drumacre Hall Stud, Drumacre Lane, West Longton, Preston, Lancs PR4 4SB 01772 614572 / 07855 782909	✓	✓	✓	✓	
Pickford, Miss Leanne 81 Gravel Lane, Banks, Southport, Lancs PR9 8BW 01704 225691 / 07808 173507	x	x	✓	✓	
Pickford, Miss Michelle 81 Gravel Lane, Banks, Southport, Lancs PR9 8BW 07742 427261	x	✓	✓	✓	

	LIST 1 RIHS ride + Display + Conformation	LIST 2 RIHS Conformation + Pony Display	LIST 3 World Championships of Colours	LIST 4 Non-qualifiers Riding Club Pony Club	Other Information
LANCASHIRE (continued)					
Porter, Mr Christopher 7 Kelbrook Drive, Burnley, Lancs BB11 4RD 01282 424531	x	x	✓	x	
Walsh-Wright, Mrs Jean Beaconsall Equestrian Centre, Moss Hey Lane, Tarleton, nr Preston, Lancs PR4 6LB 01772 813774 / 07713 629018 Fax 07713 629018	x	✓	✓	✓	
LEICESTERSHIRE					
Barton, Miss Henrietta Churchside Farm, West Leake, Loughborough LE12 5RF 01509 856025 / 07748 256307	x	✓	✓	✓	
Christie, Mrs Dawn Hall Farm Cottage, Main Street, Shangton, Leicester LE8 0PG 01858 545853	x	✓	✓	✓	
Doyle, Mrs Karel The Granary, 3 Somerby Road, Krossington, Oakham, Leics LE15 8LY 01664 454883 / 07802 299632	x	✓	✓	✓	Evaluation
Mansfield-Parnell, Mrs E Rotherwood Stud, Nook Farm, Packington Nook Lane, Ashby-de-la-Zouch LE65 2QG 01530 412095	x	✓	✓	✓	
Pole, Mrs K The Orchards, 40 School Lane, Woodhouse, Leics LE12 8UJ 01509 890038	x	✓	✓	✓	
LINCOLNSHIRE					
Davenport, Mrs C. Willoughby House, 42 Church Lane, Manby, Louth, LN11 8HL 01507 327004 / 07931 876046	x	✓	✓	✓	Driving
Latchford, Mrs Jill College View, College Farm, Thornton Abbey, Ulceby, N Lincs DN39 6UX 01469 531319 / 07710 105293	x	x	✓	✓	
Sherer, Mrs Heidi Frigowny Stud, Kent Road, Brookenby, Market Rasen, Lincs LN8 6ET 07909 982936	x	x	✓	✓	

	LIST 1 RIHS ride + Display + Conformation	LIST 2 RIHS Conformation + Pony Display	LIST 3 World Championships of Colours	LIST 4 Non-qualifiers Riding Club Pony Club	Other Information
LONDON					
Appell, Mrs V 5 Chester Gate, Regents Park, London NW1 4JH 0207 4869898 / 07836 566999	x	✓	✓	✓	
Cooper, Carol Alana Flat 43, Sheringham House, Whitelands Crescent, London SW18 5QY 020 7259 0435 / 07810 436 825	x	✓	✓	✓	
Holliday, Miss Susan 12 Wedderburn House, 95 Lower Sloane Street, London SW1W 8BZ 020 7259 0435 / 07810 436 825	✓	✓	✓	✓	
Ross, Mrs Jayne 28 Knightsbridge Court, 12 Sloane Street, London SW1X 9LJ 07860 627307	x	✓	✓	✓	
NORFOLK					
Bradfield, Mrs Lesley, Sparrows Ends, The Street, Brooke, Norwich NR15 1JR 01508 550661 / 07725 879600	x	✓	✓	✓	Evaluation
Hood, Mr Allister Buttons Farm, Clay Hall Lane, Blo Norton, Diss, IP22 2HZ 01953 681361 / 07778 407952	✓	✓	✓	✓	Norfolk
King, Wendy J Woods Farm, Fersfield, Diss, Norfolk IP22 2BL 01379 687302 / 07770 546096	✓	✓	✓	✓	
Palmer, Mrs S Apple Lodge, Chapel Street, Barford, Norwich, NR9 4BJ 01603 759545 / 07767 767060	x	✓	✓	✓	
NORTHAMPTONSHIRE					
Cook, Mr P R Mill Farm House, Mill Lane, Greens Norton, Towcester, Northants NN12 8BB 07771 974898	✓	✓	✓	✓	Working Hunter
Lloyd, Miss Katherine 3 Marsons Drive, Crick, Northamptonshire NN6 6TD 07771 640975	x	✓	✓	✓	
Paterson, Miss Jane Jasmine Cottage, 25 High Street, Podington, Northamptonshire NN29 7HS 01933 311406 / 07854 458586	x	✓	✓	✓	
Payne, Mrs Emma Slade Farm, Ringstead, Nr Kettering, Northants NN14 4ER T: 01933 460587 / 07884 317730	✓	✓	✓	✓	

	LIST 1 RIHS ride + Display + Conformation	LIST 2 RIHS Conformation + Pony Display	LIST 3 World Championships of Colours	LIST 4 Non-qualifiers Riding Club Pony Club	Other Information
NORTHUMBELRAND					
Skelton, Martin High Lodge, Netherwarden, Hexham NE46 4SP 07957 403423	✓	✓	✓	✓	
NOTTINGHAMSHIRE					
Holmes, Lady Ria c/o Sunbury House, 7 Alfreton Road, Underwood, Notts NG16 5FQ 01773 783002 / 07834 239870	x	✓	✓	✓	
OXFORDSHIRE					
Bates, Jo Stone Cottage, Church Lane, Cropredy, Banbury, Oxon OX17 1NQ 01295 750198 / 07802 312784	✓	✓	✓	✓	
SHROPSHIRE					
Parker-Jones, Mr Robert 28 Eastcote Avenue, Lawley Village, Telford, Shropshire TF4 2FR 02476 541360 / 07737 034836	x	✓	✓	✓	
Smithson, Mrs S The Cedars, Wheat Common Lane, Richards Castle, Ludlow, Shropshire SY8 4AG 07811 455067	✓	✓	✓	✓	
SOMERSET (incl AVON)					
Cozens, Mrs S A Stepley, Lower Henlade, Taunton, Somerset TA3 5LY 01823 443064 / 07860 380288	x	x	✓	✓	
Lawrence, Mr Matthew 13 St Aidans Close, St George, Bristol, SomersetBS5 8RH 07834 243282	✓	✓	✓	✓	
Vellacott, Mrs C Brimclose Farm, Winsford, Minehead, Somerset TA24 7AA 01643 851282	x	x	✓	✓	
STAFFORDSHIRE					
Careless, Mr John Fairley Stud Farm, Chestnut Cottage, Shute Hill, Chorley, Lichfield, Staffs WS13 8BZ 01543 682707 / 07740 484070	x	✓	✓	✓	
Collins, Mr Andrew 215 Congleton Road, Biddulph, Stoke-on-Trent, Staffs ST8 6QW 01782 920006 / 07885 633654	✓	✓	✓	✓	

	LIST 1 RIHS ride + Display + Conformation	LIST 2 RIHS Conformation + Pony Display	LIST 3 World Championships of Colours	LIST 4 Non-qualifiers Riding Club Pony Club	Other Information
SUFFOLK					
Atkinson, Miss Dale 3 Benefield Road, Moulton, Newmarket CB8 8SW 01638 552320 / 07778 493017	✓	✓	✓	✓	Side-Saddle Working Hunter
Cave (nee Aiken), Mrs Linzi 7 Weavers Way, Barham, Ipswich, Suffolk IP6 0TD 07766 163656	✓	✓	✓	✓	
Clarke, Mr Lee Broads Equestrian Centre, The Annex, Bamby, Suffolk NR34 7QN 07795 000436	x	✓	✓	✓	
Evans, Miss M G JP Cedars, Sudbury Road, Lavenham, Sudbury CO10 9PJ 01787 248219	x	✓	✓	✓	Working Hunter Pony
Keeling, Mrs R Poplars Farm, Tan Office Lane, Mendlesham Green, Stowmarket, Suffolk IP14 5RL 01449 766258 / 07714 329802	x	x	✓	x	
Kilbey, Mrs J The Reading Room, Great Thurlow, Haverhill, CB9 7LA 01440 783417 / 07760 208340	x	✓	✓	✓	
Rawding, Mrs Sue Attleton Farm, Attleton Green, Wickhambrook, Newmarket, Suffolk CB8 8YB 01440 821414 / 07984 766665	x	✓	✓	✓	Grading Panel
Sannick, Rebecca Bell View Farm, Manse Lane, Cratfield, Halesworth, Suffolk IP19 0DJ 01986 799006 / 07879 400113	x	✓	✓	✓	
Turner, Helen College Barn, Great Finborough, Stowmarket, IP14 3BQ 01449 612753	x	✓	✓	✓	
Turner, Stephanie College Barn, Great Finborough, Stowmarket, IP14 3BQ 01449 612753 / 07936 895756	✓	✓	✓	✓	
Walton, Margaret Miss The Firs, Norwich Road, Stonham, Stowmarket, IP14 5DT 01449 711427	x	x	✓	✓	
SURREY					
Richards, Ms C M The Rose Cottage, Horseblock Hollow, Barhatch Lane, Cranleigh GU6 7NJ 01483 277659 / 07773 217723	x	✓	✓	✓	
Robinson, Miss Deirdre Fleetmead Stud, Blindley Heath, Lingfield RH7 6JX 01342 832796 (evenings only)	x	✓	✓	✓	

	LIST 1 RIHS ride + Display + Conformation	LIST 2 RIHS Conformation + Pony Display	LIST 3 World Championships of Colours	LIST 4 Non-qualifiers Riding Club Pony Club	Other Information
SUSSEX					
Van Praagh, Mr James The Annexe, Faircote Farm, Hartfield, East Sussex TN7 4EX 01892 770787 / 07855 529553	✓	✓	✓	✓	
White (nee Curtis), Mrs S Garden Cottage, Coombe Wood, Colgate, Horsham, W Sussex RH12 4TB	✓	✓	✓	✓	
Webb, Mrs S J 19 Forest Park, Maresfield, Uckfield, East Sussex TN22 2NA 01825 749886 / 07767 885591	✓	✓	✓	✓	
WARWICKSHIRE					
Ashby-Jones, Mrs Barbara 12 Village Cottages, Lower Quinton, Stratford-upon-Avon, Warwickshire CV3 78SH 01789 720436 / 07785 986321	x	✓	✓	✓	
WEST MIDLANDS					
Bindley, Miss Paula 6 Blythe Avenue, Balsall Common, Coventry, West Midlands CV7 7YN 01837 55402	x	x	✓	✓	
WORCESTERSHIRE					
Marks, Mr Russell 12 The Lankets, Badsey, Worcs WR11 7EH 01386 834020 / 07952 582893	x	✓	✓	✓	
YORKSHIRE					
Dinsdale, Mrs Sheila Lockhill Farm, Havelock Street, Great Horton, Bradford, West Yorkshire BD7 4EX 01274 822402	x	x	✓	✓	
Dixon, David Stanley Grange Stud, Great Ayton, N Yorkshire TS9 6QD 01642 722386 / 07732 645066	x	✓	✓	✓	
Dorman, Mrs J R S Dibble Bridge Bungalow, Castleton, Whitby YO21 2DR 01287 660444 / 01287 660719	x	✓	✓	✓	
Duker, Mrs Pamela Clifford Moor Farm, Rhodes Lane, Clifford, Nr Wetherby, West Yorkshire LS23 6LQ 01937 844165 / 07939 054506	x	✓	✓	✓	
Eadon, Miss Liz Bromley Farm, Wortly, Sheffield, South Yorkshire S35 7DE 07939 906523	✓	✓	✓	✓	

	LIST 1 RIHS ride + Display + Conformation	LIST 2 RIHS Conformation + Pony Display	LIST 3 World Championships of Colours	LIST 4 Non-qualifiers Riding Club Pony Club	Other Information
YORKSHIRE (continued)					
Gladwin, Mrs Alison 33 Laurel Crescent, Ovenden, Halifax, W Yorks HX3 6RB 07961 537469	✗	✗	✓	✓	
Hunton, Mr James 8 Florence Court, Inglebury Barwick, Stockton-on-Tees TS17 0YJ 07956 504450	✓	✓	✓	✓	
Jefferson, Jo Ash Lea Cottage, Green Lane, Darley, Harrogate HG3 2QG 01423 780667 / 07801 353435	✗	✓	✓	✓	
Kirby, Philippa Dibble Bridge Bungalow, Castleton, Whitby YO21 2DR 01287 660444 / 07711 709876	✗	✗	✓	✓	
Lloyd, Mr John 15 Brookhill Close, Diggle, Saddleworth, W. Yorks OL3 5NH 01457 820330 / 07970 928812	✗	✓	✓	✓	Grading Panel Judges Assessor Evaluation
Senior, Mrs Christine 'Nowhere', 44A Smithies Moor Lane, Birstall, Batley, Yorkshire WF17 9AN 07545 044285	✓	✓	✓	✓	
Sims, Mr Paul 29 Standale Crescent, Pudsey, Leeds, Yorkshire LS28 7JG 07722 165312	✓	✓	✓	✓	
SCOTLAND					
Hamilton, Mrs M The Stables, Liffnock Yard, Hurlford, Kilmarnock KA1 5JE 01563 820992 / 07900 057920	✗	✓	✓	✓	
Karwl-Jackes, Mr John Forna Fowrie, Fraseburgh, Aberdeenshire AB43 7UD 01346 541749 / 07821 751311	✗	✓	✓	✓	
Munro, Mr James R Morven View, Spittal, Wick, Caithness KW1 5XR 01847 841255	✓	✓	✓	✓	
WALES					
Crowley, Mrs Julie 53 Medway Road, Newport, South Wales NP20 7XZ 01633 858844 / 07723 342584	✗	✓	✓	✓	
Davies, Mr Martin Robert Chase Farm, Frampton, Llantwit Major, Vale of Glamorgan CF61 2YR 01446 792725	✗	✓	✓	✓	Grading Panel Judges Assessment

	LIST 1 RIHS ride + Display + Conformation	LIST 2 RIHS Conformation + Pony Display	LIST 3 World Championships of Colours	LIST 4 Non-qualifiers Riding Club Pony Club	Other Information
WALES (continued)					
Edwards, Ms Anne The Old House, Rhiwceiciog, Pencoed, Bridgend, Glamorgan CF35 6NS 01656 861716 / 07882 574100	x	✓	✓	✓	
Heel, Mrs Eileen Bryn Rhos, Tegryn, Llanfyrnach, N Pembs SA35 0BT 01239 698630	x	✓	✓	✓	
Pesci-Griffiths, Mrs T Sunnybank Equestrian Centre, Rudry Road, Rudry, Caerphilly CF83 3DT 02920 864943 / 07767 374079	✓	✓	✓	✓	
Smale, Mr William John 32 Midland Road, Llansamlet, Swansea, West Glamorgan SA7 9QY 01792 798243	x	x	✓	✓	
Seward, Mr Charles Grogwynion, Porthyrhyd, Carmarthen SA32 8PX 01267 275485	x	✓	✓	✓	
Seward, Mrs Sandra Grogwynion, Porthyrhyd, Carmarthen SA32 8PX 01267 275485	x	✓	✓	✓	
Thomas, Miss Rachel Brynhaulog, Bryncethin, Bridgend, Glamorgan CF32 9YE 01656 720581 / 07866 427846	✓	✓	✓	✓	
Thomas, Mr Mark Lee Llain-y-Groes, Gwalchmai, Holyhead, Anglesey LL65 4SN	x	x	✓	✓	
Thomas, Mrs Marion S The Paddocks, Brocastle, nr Bridgend, Mid Glamorgan CF35 5AT 01656 654614 / 07968 163399	x	✓	✓	✓	Grading Panel Judges Assessment

SPORTSHORSE JUDGES

JUDGES IN THIS SECTION ARE RECOMMENDED FOR BRIGHTWELLS SPORTSHORSE CLASSES

Avery, Robin Drumacre Hall Stud, Drumacre Lane West, Longton, Preston, Lancs, PR4 4SB	01772 614572 / 07855 782909
Clarke, Mrs C 85 Fisher Field, Buckingham, Bucks, MK18 1ST	
Conifey, John 2 Blackacres Cottage, Goosey, Nr Faringdon, Oxon SN7 8PB	Ride 01367 718673
Cook, Mr P R 55 Falcon View, Green Norton, Towlester, North Hants, NN12 8BB	Ride 01327 359106 / 07771 974898
Evans JP, Miss M.G. Cedars, Sudbury Road, Levanham, Sudbury, Suffolk, CO10 9PJ	01787 248219
Hart, Mrs Josephine 4 Church Lane, Wicken, Milton Keynes, MK19 6BU	01908 571278 / 07966 601475
Hollings, Nigel Blue Slate Stables, Clayton-le-Dale, Blackburn, Lancashire, BB1 9DP	01254 814805 / 07808 583929
Hoyle, Mrs Janet Stormer Hill Close Farm, Tottington, Bury, Lancs, BL8 3PE	01204 888447 / 07881 943873
Lawrence, Matthew 2 Cottonwood Drive, Longwell Green, Bristol, Avon, BS30 9UF	Ride 01179 091893 / 07834 243282
Lloyd, Mr John 15 Brookhill Close, Diggle, Saddleworth, West Yorkshire, OL3 5NH	01457 820330 / 07970 928812
Marks, Mr Russel 11 Manorside, Badsey, Worcs, WR11 7EQ	Ride 01386 834020 / 07952 582893
McDonald-Basset, Mrs Deborah 7 Poplar Close, Leighton Buzzard, Beds, LU7 3BS	Ride 01525 373510
Oliver, Nigel Black House Farm, Eye Green, Peterborough, Cambs, PE6 7TT	Ride 07974 349459
Patrick, Christopher Drumacre Hall Stud, Drumacre Lane West, Longton, Preston, Lancs, PR4 4SB	Ride 01772 614572 / 07855 782909
Richards, Miss J.V. The Rose Cottage, Horseblock Hollow, Barhatch Lane, Cranleigh, Surrey, GU6 7NJ	01483 277659
Russel, Lynn Durfold Farm, Dunsfold, GU8 4PQ	01783 200277 / 07855 106096
Seward, Mr Charles J Grogwynion, Porthyrhyd, Carmarthen, Carmarthenshire, SA32 8PX	01267 275485
Seward, Mrs Sandra J Grogwynion, Porthyrhyd, Carmarthen, Carmarthenshire, SA32 8PX	01267 275485
Turner, Helen College Barn, Gt Finborough, Stowmarket, Suffolk, IP14 3BQ	01449 612753 / 07887 751605
Turner, Stephanie College Barn, Gt Finborough, Stowmarket, Suffolk, IP14 3BQ	Ride 01449 612753 / 07936 895756
Walsh-Wright, Mrs Jean Beaconsall Equestrian Centre, Moss Hey Lane, Mere Brow, Preston, Lancs, PR4 6LB	01772 813774 / 07713 629018

SHOWING TIPS

SADDLE – A well-fitting saddle is essential to ensure that the horse is comfortable and able to move freely, and that the rider is balanced and can achieve the correct position. Stand back and look at your horse or pony wearing his saddle. Is the overall picture a pleasing one of correct proportions, or does the saddle detract from his overall appearance?

A straight cut saddle enhances and emphasises a good front, while saddles with shorter flaps will give the impression of more depth of girth. Over-large cantles and pommels can create the effect of a horse or pony seeming longer in the back than they really are.

Numnahs are useful for protecting both the horse's back and the saddle's panels. Some cold-backed horses appreciate soft sheepskin or fluffy fabric, while it can tickle and irritate others. So try out any equipment at home first. Numnahs should be dark in colour, neat, tidy and unobtrusive.

If your saddle has a tendency to slip, yet fits well, you might want to try a Saddle Pad. The pad's unique material forms a bond between the saddle and the horse or pony's back, helping the saddle stay in place. And the good news is that you can cut the pad with scissors for a neat finish just around the saddle area.

It is advisable to ask a qualified saddle fitter to check the fit of your saddles regularly as horses and ponies can change shape as they mature or become better conditioned.

HAT – Check the regulations regarding riding hats relevant to your classes.

PRESENTATION – Attention to detail is all important. Take a few dark coloured cords to shows with which to secure your competitor number – so much smarter than that horrid white string! Trimming the corners off your number to make them rounded also adds to the streamlined image.

REIN – Although plain leather reins are correct, they can be terribly slippery in wet weather. So buy a pair of New Grip reins, laced leather reins or leather reins with inside rubber grip – all very effective. When using a double bridle, it is helpful to have a non-slip bradoon rein at all times. After all, as anyone who has galloped an enthusiastic hunter in a big county show ring will testify, showing is about riding, not just standing around looking pretty!

GLOVE/WHIP – Putting on your gloves and picking up your whip is the last thing you do before you mount up, work in and enter the ring; so make sure you always know where they are, and keep spares just in case. Why not order them now? Leather gloves always look classy, while string gloves are more traditional – and offer better grip in the rain, and on the rein! Show canes can be plain leather covered, with a nickel cap adornment, and come in black or brown.

FOOTWEAR – Well-worn boots, but so shiny you can see your face in them; that's the professional showman or woman's trademark. And the only way to achieve that effect is to buy a good quality pair in the first place, wear them at every opportunity, and clean them regularly. Always dry boots away from direct heat, with newspaper stuffed inside. Support them with boot trees when not in use. Long boots come in a choice of fittings, from narrow to wide, and a choice of leg heights. Many showing people now favour the flattering higher cut semi dressage style boot.

BRIDLE – In hunter classes, four year olds may be shown in a snaffle bridle; older horses should wear a double bridle or pelham with two reins. Martingales are permitted only in working hunter classes. Hacks, riding horses and cobs should also be shown in doubles or pelhams, while novices may be shown in a snaffle bridle.

Snaffle bridles are correct for lead rein, first ridden, novice show ponies and novice show hunter ponies, others should wear a double bridle or pelham with two reins. In lead rein classes, the lead rein must be attached to the noseband and not the bit.

Be guided on your choice of bridle by suitability for the horse or pony you are showing. Clearly a handsome cob looks better in a stronger, bolder bridle while more delicate leatherwork will suit the show pony's exquisite head. But even within the class categories, different styles of

bridles – various widths of leather, styles of noseband, colours for browbands when appropriate, stitched or plain presentation – will enhance various show animals' heads.

Bridle fit is also crucial if the horse or pony is to be comfortable as well as correctly turned out. Common mistakes include a browband that is too loose and sags untidily or one which is too tight so that it puts pressure on the base of the ears and leaves a bare-looking forehead. Sometimes, it is necessary to mix and match various parts to make up a bridle that fits perfectly. Generally speaking, the plainer the head, the thicker the bridle leather should be.

Use the bridle in which you intend to show your horse or pony at home so that you both get used to it. When you clean it before a show, make a note of which holes each part buckles into, thus avoiding panic on the big day. Bits should be spotless (with a last minute wipe before going into the ring), old saddle soap cleaned out of the holes in the leatherwork with a matchstick, buckles kept free from grease to create a picture of perfection.

CLOTHING – Do your horse or pony justice with a well cut jacket, flattering waistcoat, breeches or jodhpurs which fit properly, a smart but safe hat, and perfectly polished boots. Sleeves that end above the wrist, saggy boots and a battered hat will do you and your horse no favours in the ring. Above all, a correct turnout shows respect for the judge.

Your groom also needs to be well turned-out when he or she comes into the ring. Smart trousers, shiny boots, a shirt and tie – preferably teamed with your own – and a jacket or waistcoat, with maybe a hat too, make a good impression as your helper rushes forth with the grooming kit.

When showing in-hand, choose your footwear with care – because you're going to have to move as well as your pony! A hat, either a riding hat, bowler or smart trilby, always completes an outfit, as does a smart pair of gloves. A shirt and tie looks smart on both sexes, while a waistcoat goes to prove you've made the effort if it really is too hot for a jacket. Don't forget your show cane. Smart, stretchy Showing Trousers, make ideal legwear for the in-hand exhibitor.

When choosing a jacket, try it on and sit in the riding position to make sure it is long enough to drape elegantly. The fit must be close enough to be flattering, but ensure there is sufficient shoulder room to ride comfortably.

Oh to have the perfect figure! For those of us who don't, a jacket with one long centre vent can be more flattering than double vents; well cut garments in darker colours can hide a multitude of sins; while those who wear cutaway coats really do need the figure – and the waistcoat – to get away with it!

ALL ABOUT 'ELITE'

The BSPA has the following 'Elite' scheme for Graded Mares and Stallions

WHAT IS ELITE

Elite status is required demonstration of success over a sustained period of performance either as a Sports Horse or at National Championship Show level.

Three categories are in operation:

1. PERFORMANCE ELITE – BSJA GRADE A - BHT ADVANCED - BD MEDIUM

Performance Elite is attained when a Graded mare or stallion reaches one of the above verifiable levels in affiliated disciplines. Verification of the above levels will be required in the form of an Official printout from the relevant governing bodies. There are also categories for

driving, western and distance riding which can be achieved through printouts from the Official Organisations the requirements for Elite available on request.

Any Graded that Mare or Stallion that represents its Country and had gone through an Official selection process from a Recognised Body may automatically be given Elite Status.

2. SHOWING ELITE – Mares 1200 Points Stallions 2500 Points all to be achieved at the BSPA National Championship show the World Championships of Colour.

showing Elite offers 'Show' horses and ponies the same status as Performance horses and ponies and is dependent on points gained by a proven showing record over three (30 or more years at the BSPA National Championship Shows.

Graded mares will require an accumulation of a minimum of 1200 points, whilst Graded Stallions will require a minimum of 2500 points. Should an animal gain the required minimum points in two seasons it must compete a further season and gain an additional 500 points to qualify.

Points may also be accumulated from any progeny's results at the National Championship Shows. Points gained by first generation progeny or either sire and/or dam would be awarded at 50% of progeny's points.

All Progeny must have Verified Parentage documents.

What Points are awarded?

Qualification for Nationals – 50 points

All points to be achieved at BSPA National Show.

Class Placing – 1st 100 points, 2nd 50 points

Qualifier Finals – 1st 150 points, 2nd 75 points

Type Championship – Champion 50 points, Reserve 25 points

Ring Championships – Champion 150 points, Reserve 75 points

Supreme Championships – Champion 250 points, Reserve 125 points

Overall Supreme Championships – Champion 300 points, Reserve 150 points

Overall Best in Show 300 points

3. BREEDING ELITE – For Brood Mares that have never had a competitive ridden career – and where not ridden at their Grading. Elite status is given for Dam who have three BSPA Graded offspring and must include at least one BSPA Graded Stallion.

New Category

PREMIER ELITE – Stallion or Mare that is Graded Elite in their own right either Performance Showing or Broodmare, and is the sire or dam of two BSPA Elite progeny one of which must be an Elite Stallion.

How do I proceed if I think my Stallion or Mare is Eligible for Elite?

If you think your Stallion or Mare is eligible for either Elite Status or Premier Elite Status then you should apply to the BSPA Secretary giving details of your horse/pony together with a printout of either competition results from the relevant governing body, or a full comprehensive list which we will then check, which will be verified by the BSPA – **it is up to you to keep meticulous records.**

It is acceptable for the horse or pony to achieve Performance Elite in addition to Showing Elite, but criteria for both must be achieved.

BSPA STUBBOOK STRUCTURE AND RULES

The BSPA Studbook Volume I was commenced in 1993 with the introduction of Verified Breeding Procedures.

Subsequently it has been revised in 2006 and Volume XVI arranged to the following structure and principles.

A – INTRODUCTION AND PRINCIPLES OF MANAGEMENT:

1. The BSPA Studbook is arranged into three volumes (Registers) each with 4 Sub-sections.
2. The Studbook is for all BSPA Breeding Stock and their progeny.
3. The BSPA believe that quality, worth and breeding improvement for Skewbald & Piebald's is achieved via the combined effects of Assessment (Grading & Youngstock Evaluation) and rewarding sustained performance success (Elite Status) as well as Pedigree verification.
4. Each of these elements is reflected in the Studbook structure.
5. Because of 3 above, the BSPA have adopted a fundamental value that an equine can be graded out/up from a lower birth register to a higher evaluation and/ or performance register.
6. Pedigree is consistently rewarded within the structure as it results in an equine being placed in a higher sub-section of any register.
7. Each register has an Appendix sub-section for the "whole coloured" stock of BSPA Graded sires & Dams
8. A Foundation Stallion & Mare Register is also operated Register 4 (not part of the Main Studbook) but also having 4 sub sections dependent again on verified and documented pedigree. This register includes all Registered but ungraded Mares, the historic licensed but ungraded stallions and their stock, and external licensed and graded stallions conforming to 10 below. This also allows imported breeding stock from the USA (with full documentation) to have their breeding details placed in BSPA passports.
9. Progeny will be incorporated into the same Register and Sub-section as their sire or dam. Whichever is the highest?
10. ***External Stallions (Licensed/Graded by another Studbook) Wishing to Register & enter the BSPA Studbook are placed in the Foundation Register 4 until their BSPA Grading when they will achieve full studbook status.***
11. Finally we operate a fifth Register **not part of the studbook** (Register 5) for the Verified breeding stock of licensed or unlicensed but ungraded Coloured Stallions. This is external to and not part of the studbook.

Stock in this Register MUST Grade with BSPA to achieve a Studbook Listing.

B – STRUCTURE

1. The BSPA Main Studbook is divided into three Registers each with three subsections and an Appendix (4).
Register 1 (Head Studbook) + 4 sub-sections.
Register 2 (Main Studbook) + 4 sub-sections.
Register 3 (Main Studbook) + 4 sub-sections.
2. The Register is determined by the Grading % attained by the Sire or Dam and the Sub sections by the existence of a 'verified Pedigree' or not. The Appendix (supplemental) is for the whole coloured progeny of a BSPA Graded Sires or Dam.

3. Entry into the Main Studbook is via BSPA Grading or at birth for the progeny of an existing Graded Sire or Dam.
4. Additionally we have a **Foundation Register (Register 4)** for BSPA currently (as 01/01/2007) registered but ungraded Mares and all newly registered "*Verified Breeding*" external breeding stock and their Progeny.
5. **EXTERNAL STALLIONS OR MARES GRADED WITH ANOTHER RECOGNISED STUDBOOK –**
Such Stallions/Mares are eligible to enter the BSPA Studbook via our Grading process. Rules as current to the Grading procedures at the time of application.
Thereafter they are registered as their BSPA crossover Grading result determines (refer below)
Initially the equines are entered into the Foundation Register 4.

REGISTER 1 – HEAD STUDBOOK

- The Head Studbook is confined to ALL BSPA Elite Graded Stallions and Mares and their progeny.
- Elite Grading Status is determined by the BSPA Grading rules currently operating at any given time.
- The Head Studbook (HSTB) has three Sub-sections each determined by the verified pedigree of the sire/dam.

Sub-section 1 – when **4 generations** or more of documented pedigree exists and has been confirmed, (including by DNA parentage test at BSPA discretion) 1-1 **Honoraria**, when the sire/dam from a lower register achieves "**Triple Elite**" status via achieving their own individual Elite Status (not assisted by Progeny results). **AND**

Produces a minimum of 2 BSPA Graded Progeny; (Breeding award) **AND** Produces a minimum of 2 BSPA Elite Graded Progeny.

Sub-section 2 – When **2 generations** or more of documented pedigree exists and has been confirmed, (including by DNA parentage test at BSPA discretion) **Sub-section 3** – When **1 or no** generations of documented pedigree exist and has been confirmed, (including by DNA parentage test at BSPA discretion)

Sub-section 4 – Appendix Register (non Coloured stock of above).

MAIN STUDBOOK REGISTER 2

- ALL BSPA Graded Stallions Grading score of 80% or above and their Progeny
- ALL BSPA Graded Mares Grading score of 75% or above and their Progeny

Sect 1. - Equines with 4 generations of documented Pedigree or more

Sect 2. - Equines with 2 generation of documented Pedigree or more

Sect 3. - Equines of 1 generation of documented Pedigree or none (UVB)

Sect 4. - Appendix Register (non Coloured stock of above)

MAIN STUDBOOK REGISTER 3

- ALL BSPA Graded Stallions Grading score of 70% or above and their Progeny
- ALL BSPA Graded Mares Grading score of 65% or above and their Progeny

Sect. 1 - Equines with 4 generations of documented Pedigree or more

Sect. 2 - Equines with 2 generation of documented Pedigree or more

Sect. 3 - Equines of 1 generation of documented Pedigree or none (UVB)

Sect. 4 - Appendix Register (non Coloured stock of above)

YOUNG HORSE EVALUATIONS EXPLAINED

Young horse evaluations are for 1, 2, 3 year old colts and fillies that are being assessed as having the potential to become graded Stallions and Mares.

They are assessed on conformation – type – movement and athleticism – temperament – manners – and the potential to Grade. All types are encouraged to be presented.

Ponies not to exceed 153cm at maturity and horses calculated to exceed 153cm at maturity, native/traditional/cob type + plaited types. So every evaluation will have four sections:

1. Plaited Horse – colt or filly to exceed 153cm at maturity.
2. Plaited Pony – colt or filly not to exceed 153cm at maturity.
3. Heavyweight/Traditional/Native/Cob Horse – colt or filly to exceed 153cm at maturity.
4. Heavyweight/Traditional/Native/Cob Horse – colt or filly not to exceed 153cm at maturity.

SCORING SYSTEM

Red Preferred – for those animals scoring 71%+ at the evaluation. Those achieving this status will be awarded 1% to be added to their grading score if they successfully grade.

Blue Preferred – for those scoring 65% – 70%.

White Certified – for those scoring 64% or less.

There will be a Champion Award at each evaluation.

Any animal may be presented a maximum of three times as a yearling, 2 year old and 3 year old – so could in theory achieve the maximum of 3% credit to be added to a successful Grading score which would elevate them in the BSPA Stud Book.

All scores sheets and rosettes will be given out on the day, as will certificates for those achieving Red preferred status. All horses and ponies should be well handled and be able to trot in-hand, all should be presented in good condition.

BSPA OFFICERS 2014

Chairman: Lynda Lodge

Joint Vice-Chairman: Anne Sizmer

Joint Vice-Chairman: Lesley Bradfield

Company Secretary: Sandra Lawrence

GENERAL COUNCIL MEMBERS

Frederick Bradfield, Karel Doyle, Deborah Dunscombe,
Robert Holden, Colin Peopall, Christopher Porter,
Jenna Saunders, Rebecca Walker, Sarah Walker

**BSPA REGISTERED OFFICE: Stanley House, Silt Drove,
Tippis End, Nr Welney, Cambs PE14 9SL**

Tel: 01354 638226 Mobile: 074 111 211 06

Email: bspashows@aol.com www.bsponline.com

Company limited by guarantee . Registered in England No 3671904

APPLICATION TO BE INCLUDED ON THE BSPA JUDGES PANEL 2015

The BSPA would be delighted to receive applications from Judges for inclusion onto this panel as follows:

- A Judge currently serving on any National Panel that assesses for Conformation and Performance knowledge and ability may be automatically transferred onto the BSPA panel replicating their current classification on written application and at BSPA discretion.
- All Judges applying to come onto the Panel will be required to come forward for assessment and/or interview.
- A Judge currently assessed for either a Ride or Breeding & Conformation Panel and wishing to “upgrade” their classification may do so following completion of the BSPA Judges Assessment held Annually.
- A judge not currently serving on any National Panel may apply for the BSPA Judges assessment via the submission of an Equestrian CV and with a letter of Recommendation from a National Panel Judge and will then come forward for examination.
- Judges applying for inclusion on the BSPA Panel must be 21 years of age or over.
- Applications in writing to BSPA, Stanley House, Silt Drove, Tipps End, Welney, Cambs PE14 9SL. ENVELOPES TO BE MARKED JUDGES ASSESSMENT PLEASE.
- BSPA reserves the right to appoint Judges to their panel by official invitation.

NEXT ASSESSMENT: NOVEMBER 2014 - Send SAE for details

JUDGES ARE APPOINTED ON AN ANNUAL BASIS AS FROM 1st JANUARY EACH YEAR, THE BSPA RESERVES THE RIGHT TO NOT APPOINT OR RE-APPOINT ANY JUDGE AT ITS DISCRETION. ALL JUDGES MUST BE FULLY PAID UP CURRENT MEMBERS OF THE BSPA IN ORDER TO REMAIN ON THE BSPA JUDGES PANEL. ALL JUDGES ARE EXPECTED TO ATTEND A JUDGES CONFERENCE ONCE EVERY THREE YEARS (FULL DAY ATTENDANCE).

**BSPA REGISTERED OFFICE
Stanley House, Silt Drove,
Tipps End, Nr Welney, Cambs PE14 9SL
Tel: 01354 638226**

Email: bspashows@aol.com www.bspaonline.com

Company limited by guarantee . Registered in England No 3671904

WORLD CHAMPIONSHIPS OF COLOUR

NEW DATE • NEW DATE • NEW DATE
13th–14th SEPTEMBER 2014

**Houghton Hall EC, New Manor Farm,
Sawtry Way, Houghton,
Cambs PE28 2DY**

ALL SPONSORSHIP VERY WELCOME

SPONSORSHIP SECRETARY

**Mrs Lesley Bradfield
Sparrows End, The Street, Brooke,
Norwich, Norfolk NR15 1JR
Tel: 01508 550661 / 07725 879600**

**Stanley House, Silt Drove,
Tipps End, Nr Welney, Cambs PE14 9SL
Tel: 01354 638226
email: bspashows@aol.com**

Office hours: Tuesday – Friday, 11:00am – 3:00pm

www.bsponline.com